

Note: -
Painting - by Mfg.
Signals and all metal surfaces exposed to the weather shall have shop coat of red lead.
Relay houses and instrument cases to have shop coat of red lead and two coats of aluminum paint on outside surface. Inside of houses and instrument cases to have shop coat of red lead between steel and lining and after lining is installed the interior including all shelves and supports to be painted with aluminum paint.

Note: -
Painting - by Railroad.
Inside of all signal masts must be swabbed with raw linseed oil and thoroughly set before installing.
All instrument cases and cable terminal boxes must have a spotting coat and final coat of aluminum paint inside and out.
Signal face and hood to be painted dead black.
All other metal surfaces must have spotting of priming paint where required and two coats of aluminum paint.
Foundations to be natural finish.

REVISIONS	
3-30-42	Added cast iron letter 'A' for absolute signals. Changed face of drop cable. Changed location of flexible conduit.
4-25-42	Reference for foundations for Fig 1 and Fig 2.
12-15-43	Added distances from foundations to Gage of Rail.
4-14-47	Clamps referred to C.E. 10302, sh. 4.
10-7-47	Length of Flex Conduit for Top Unit was 2'-4".

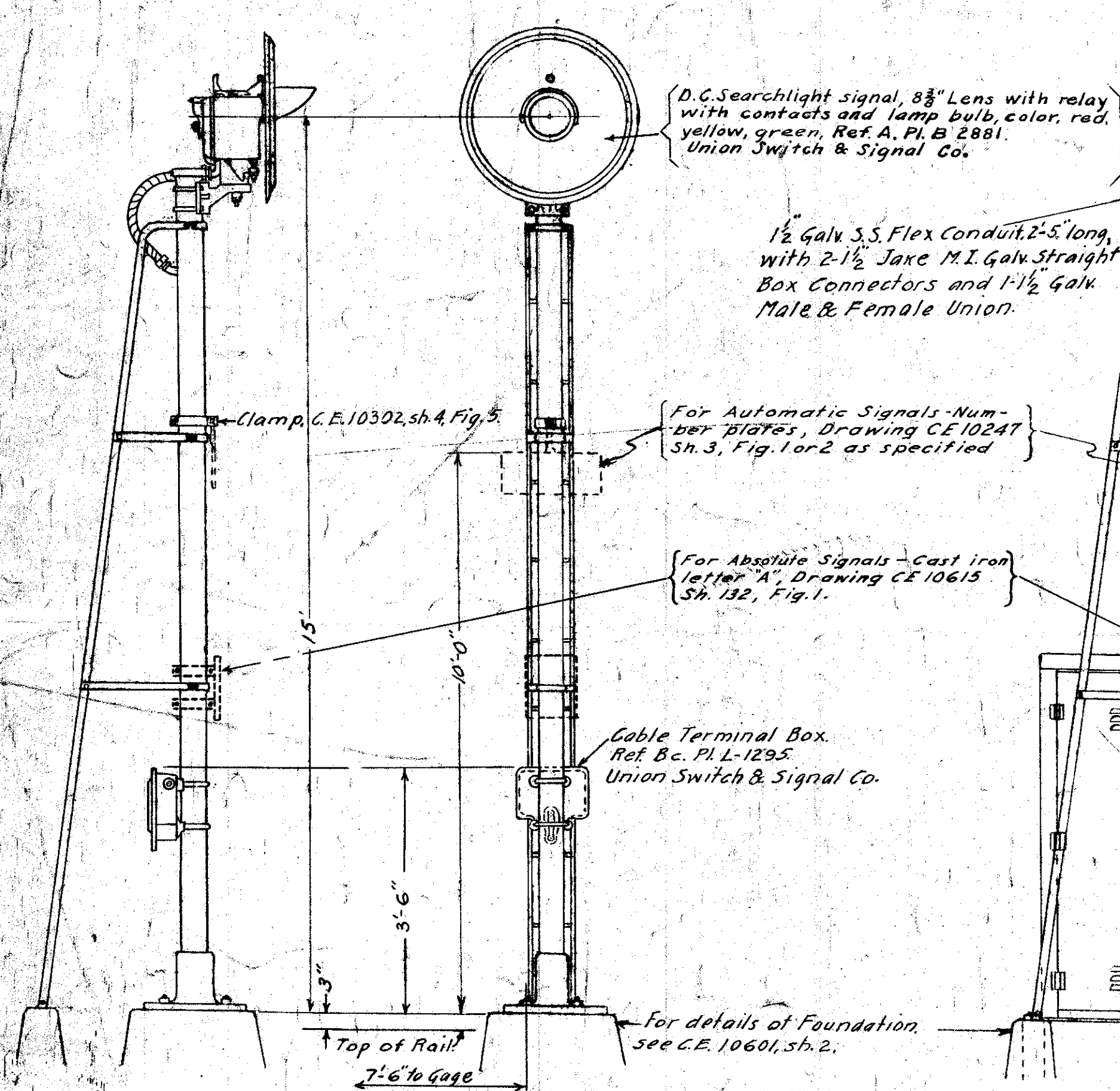


FIGURE 1.
SEARCHLIGHT SIGNAL WITH RELAY BOX.

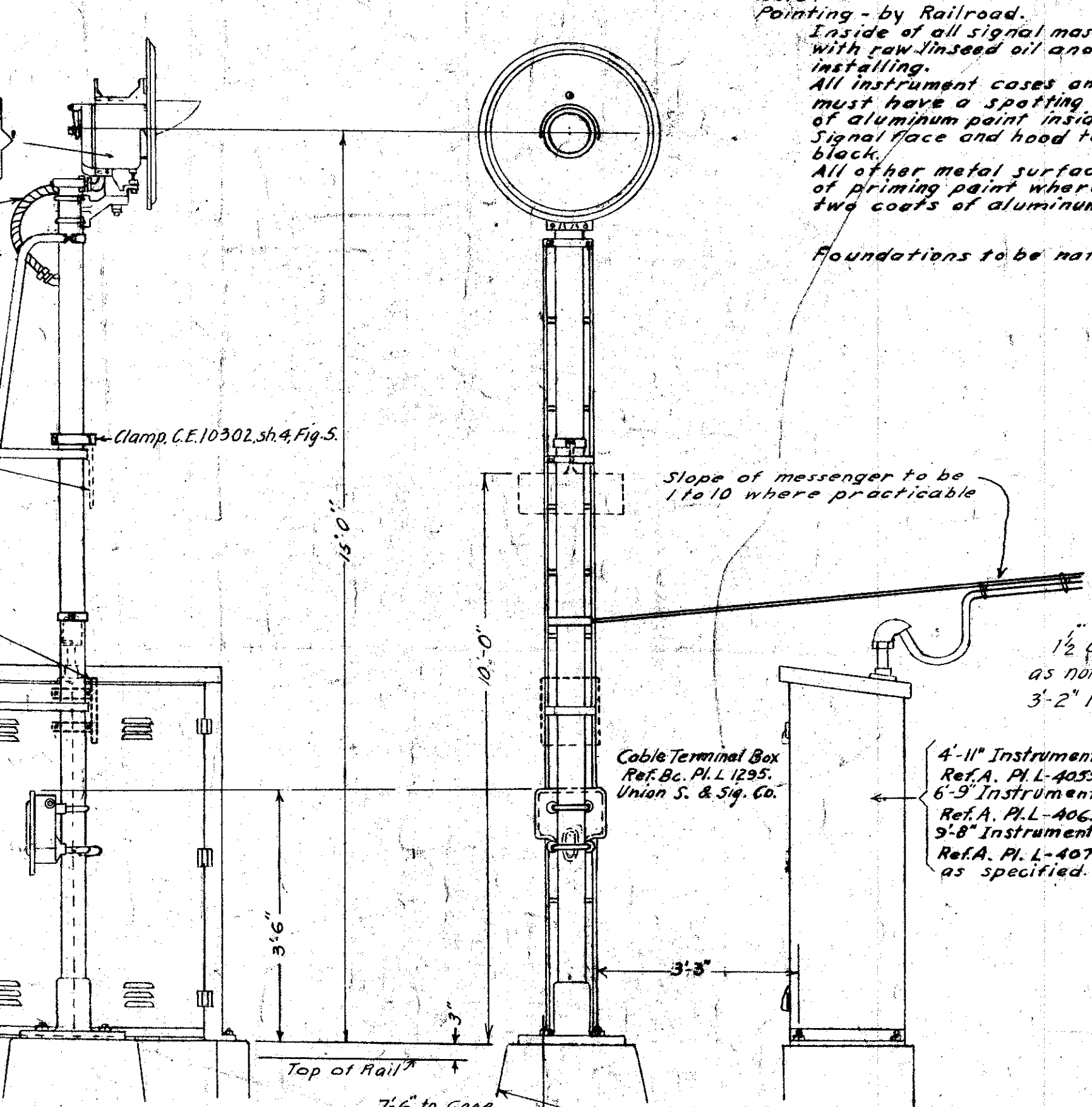


FIGURE 2.
SEARCHLIGHT SIGNAL WITH SHEET STEEL INSTRUMENT CASE.

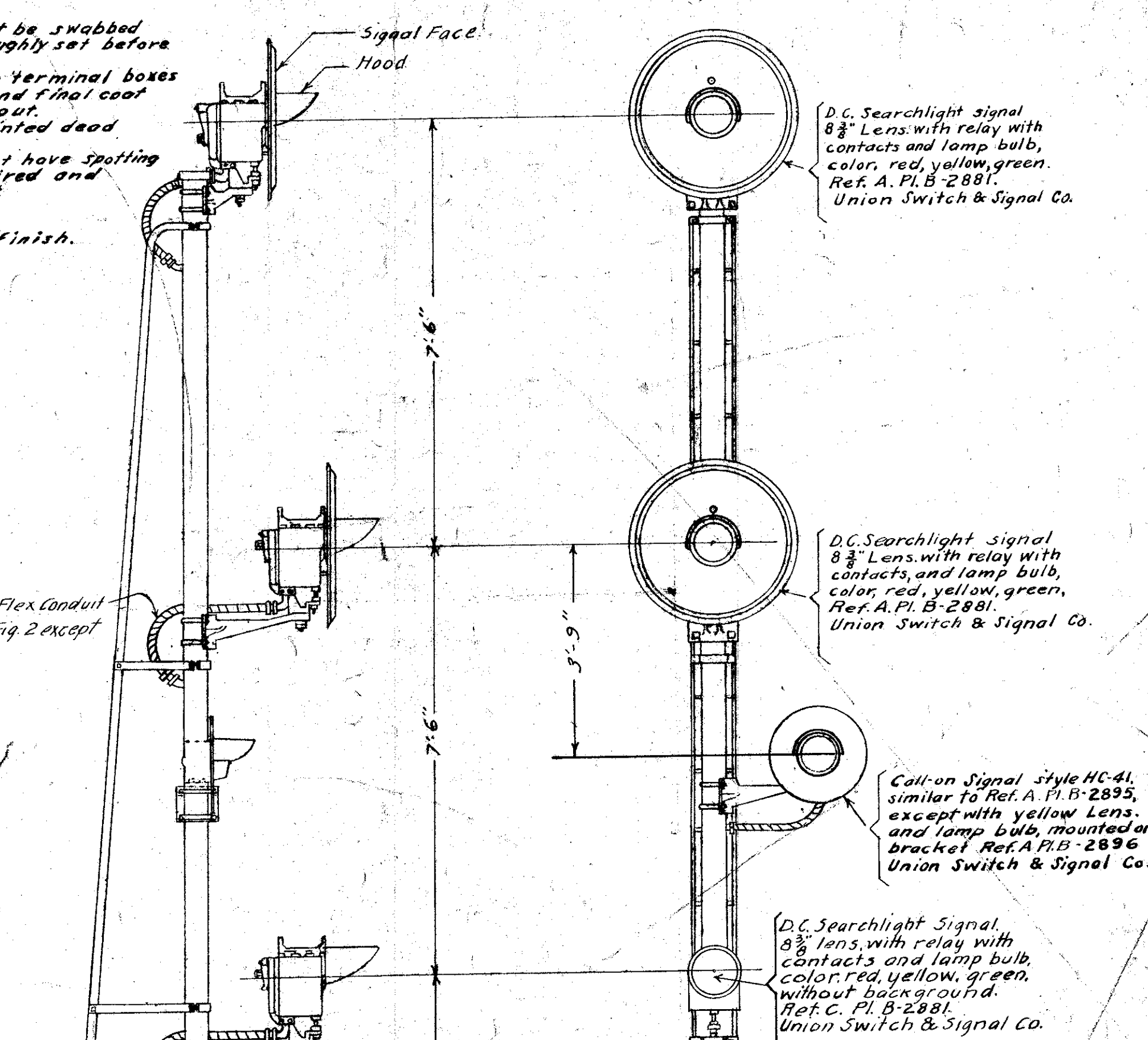


FIGURE 3.
SEARCHLIGHT SIGNAL ON SINGLE INSTRUMENT CASE.

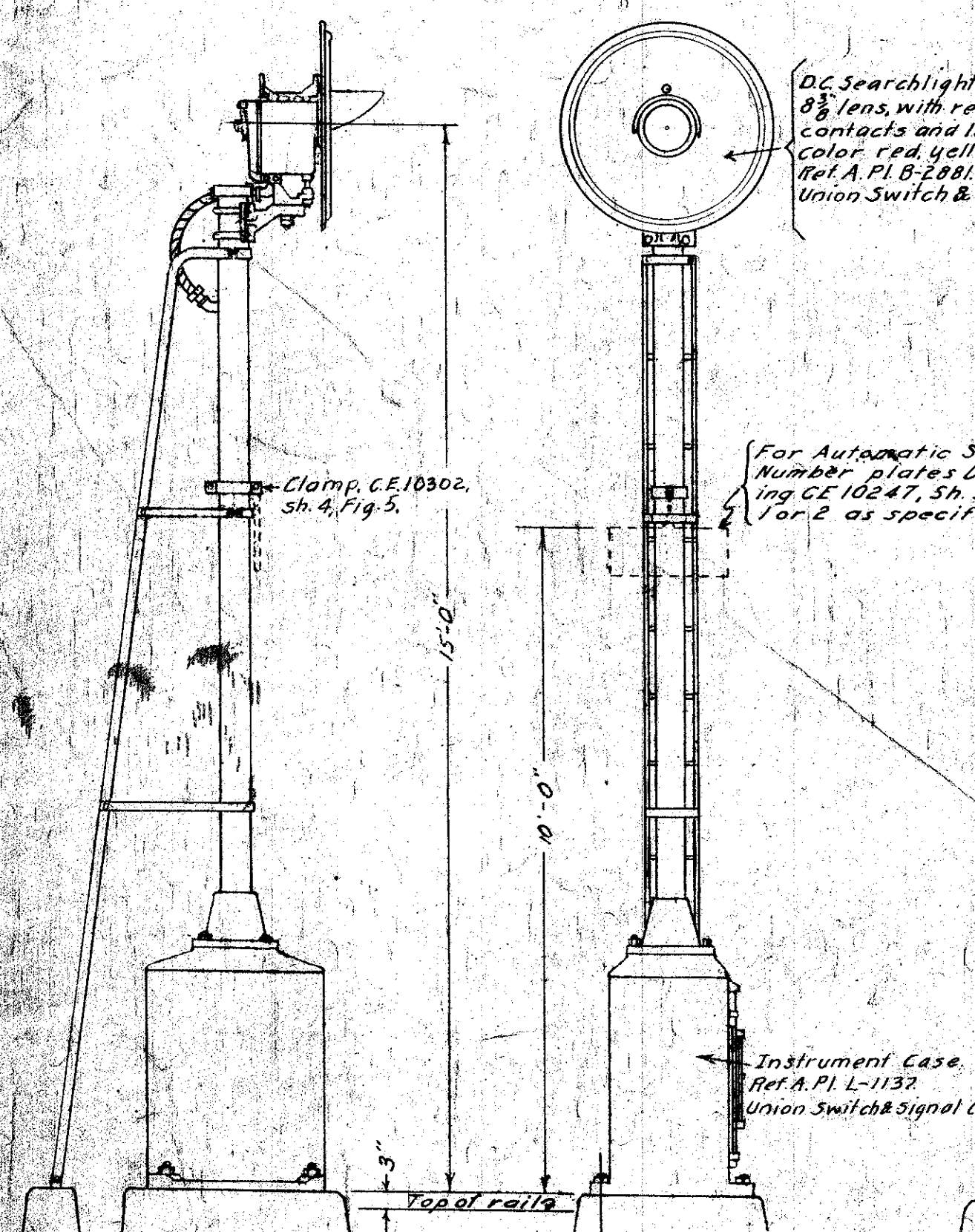


FIGURE 4.
SEARCHLIGHT SIGNAL WITH ROUTE SIGNAL ON SINGLE INSTRUMENT CASE.

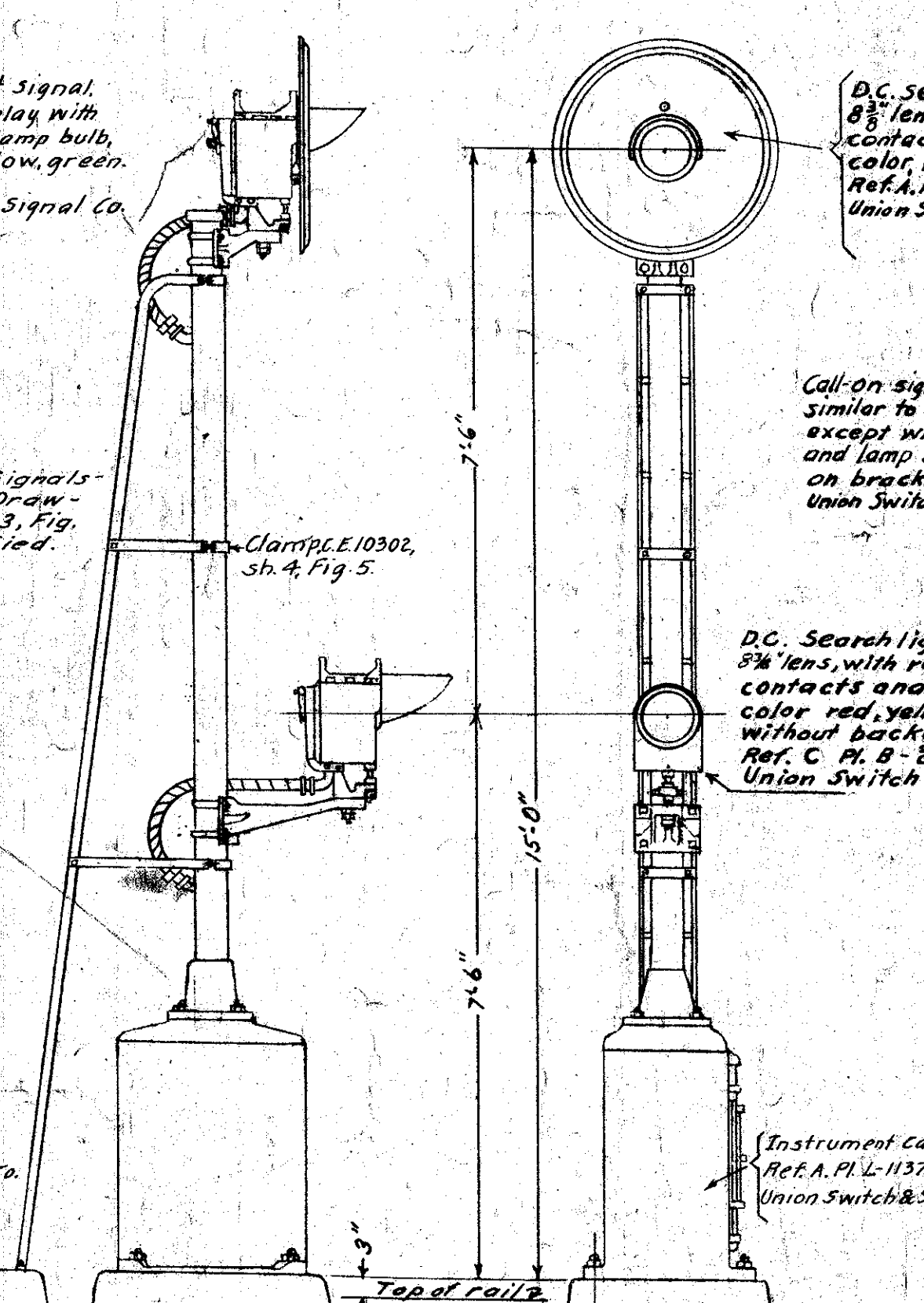


FIGURE 5.
SIGNAL ASSEMBLY WITH ROUTE SIGNAL AND CALL ON SIGNAL ON SINGLE INSTRUMENT CASE.

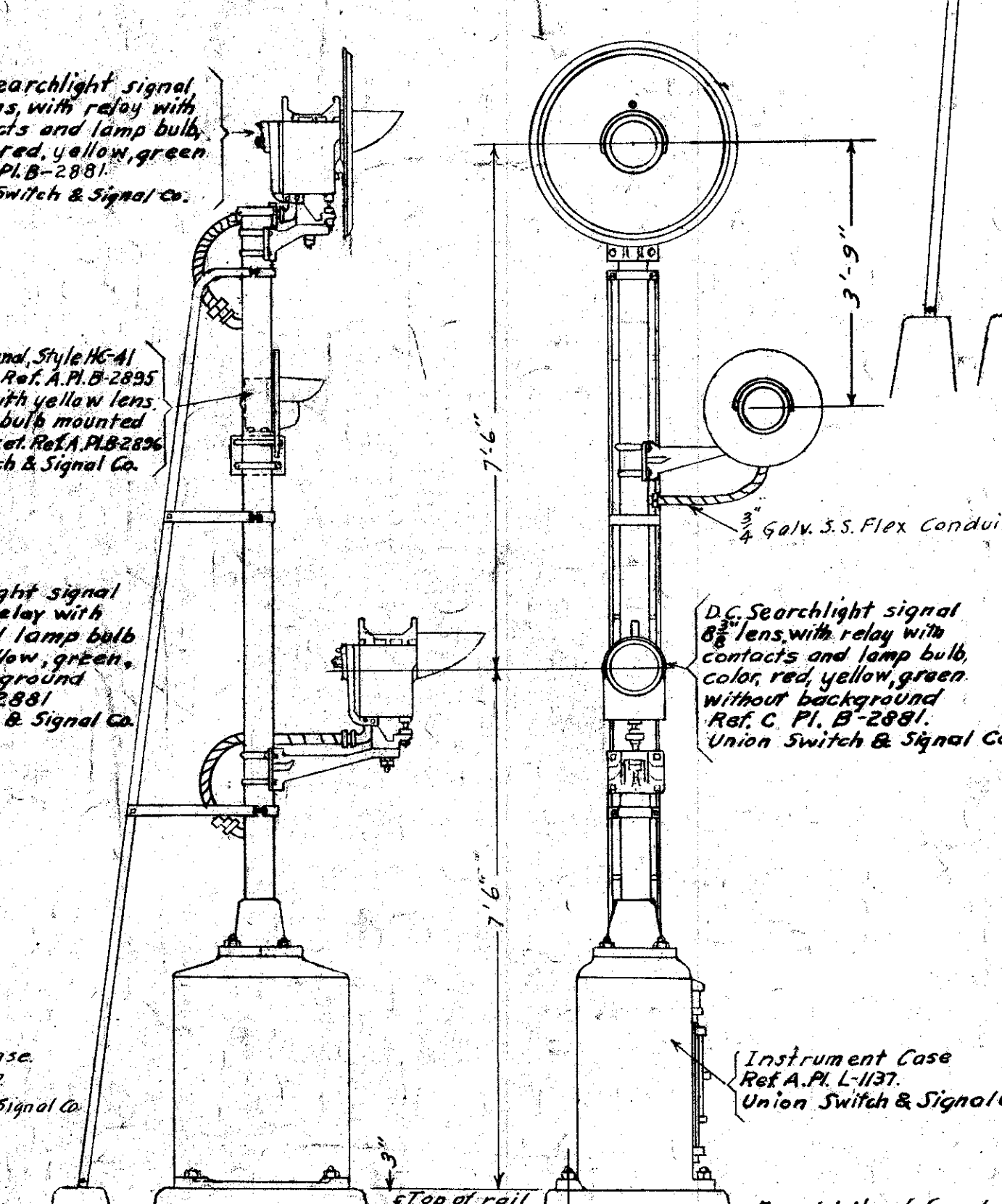


FIGURE 6.
SIGNAL ASSEMBLY WITH TWO ROUTE SIGNALS AND CALL ON SIGNAL.

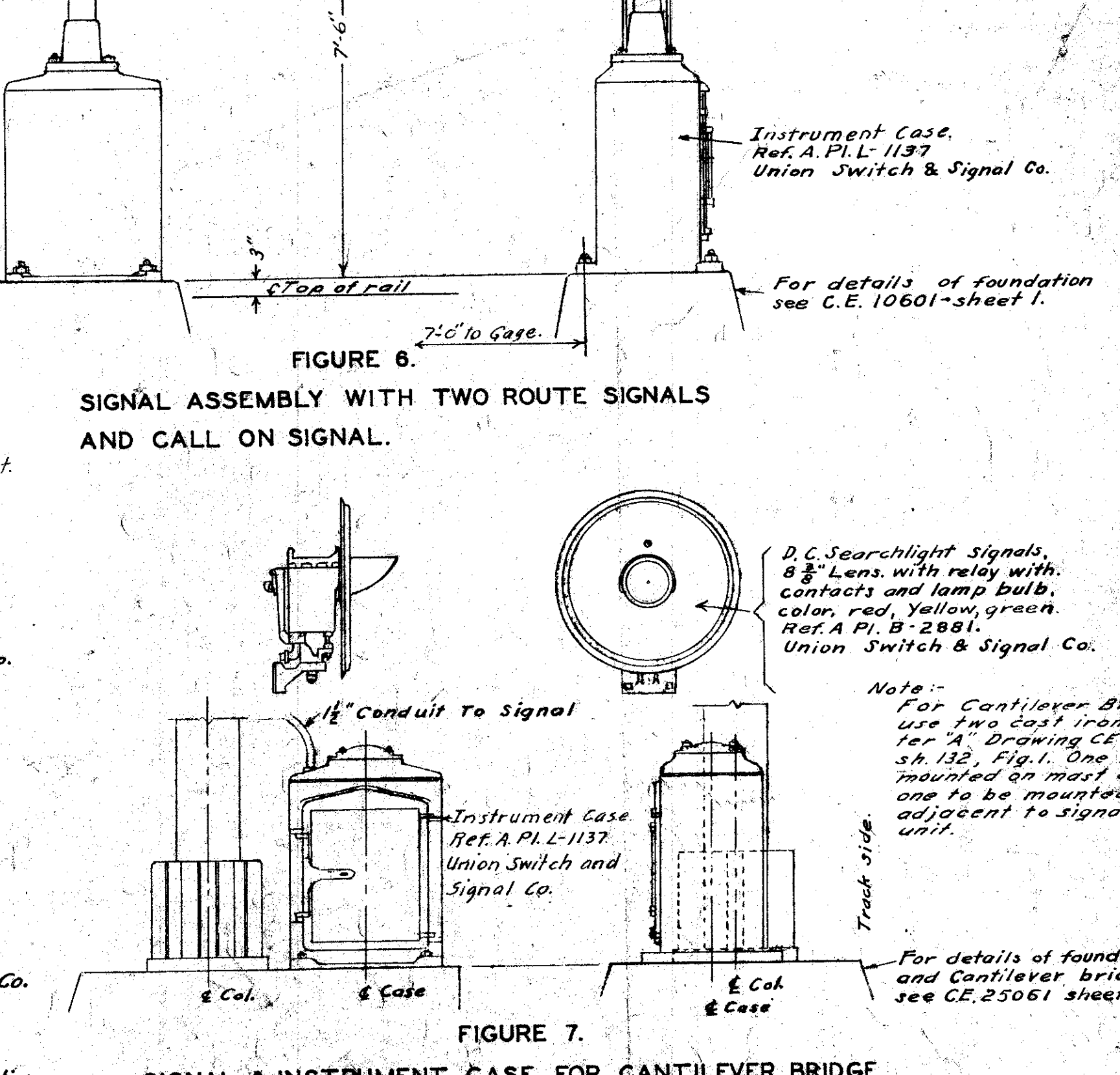


FIGURE 7.
SIGNAL & INSTRUMENT CASE FOR CANTILEVER BRIDGE.

Note: -
For Cantilever Bridges, use two cast iron letter 'A' Drawing CE 10615 sh. 12, Fig. 1. One to be mounted on mast and one to be mounted adjacent to signal unit.
Truck side.

SOUTHERN PACIFIC COMPANY
PACIFIC LINES

Note: -
All wire inlets to be sealed with putty and insulating paint.
Bottom of instrument case, Ref. A, P.L. 1137 to be filled with concrete and finished smooth and level with bottom of case.
When above instrument case is used, paint letter 'A' for Absolute Signal on end of instrument case.

SIGNAL ASSEMBLIES
SCALE: 1/2"=1'-0" 7-2-41.