

Fig. 1  
Ladder for Searchlight Signal.  
15' High-Single or Double Case.  
Scale: 1/4"=1'-0"

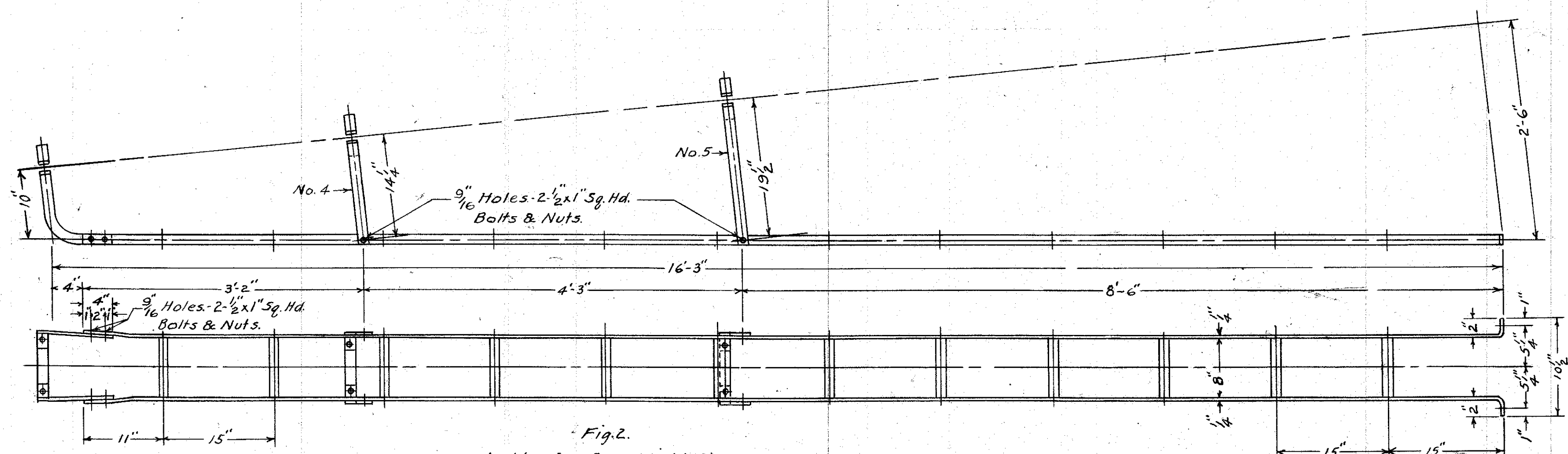


Fig. 2  
Ladder for Searchlight Signal.  
18' High-Single or Double Case.  
Scale: 1/4"=1'-0"

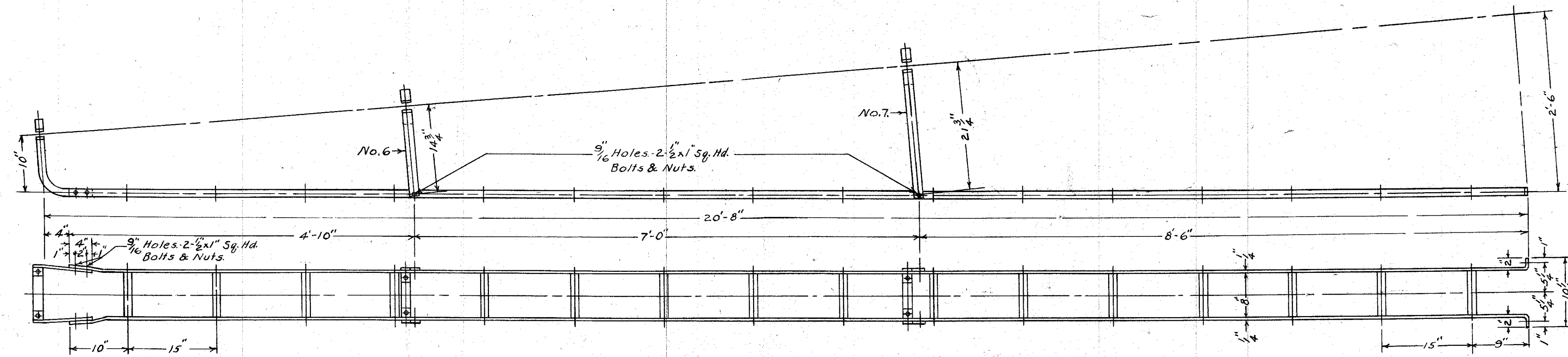
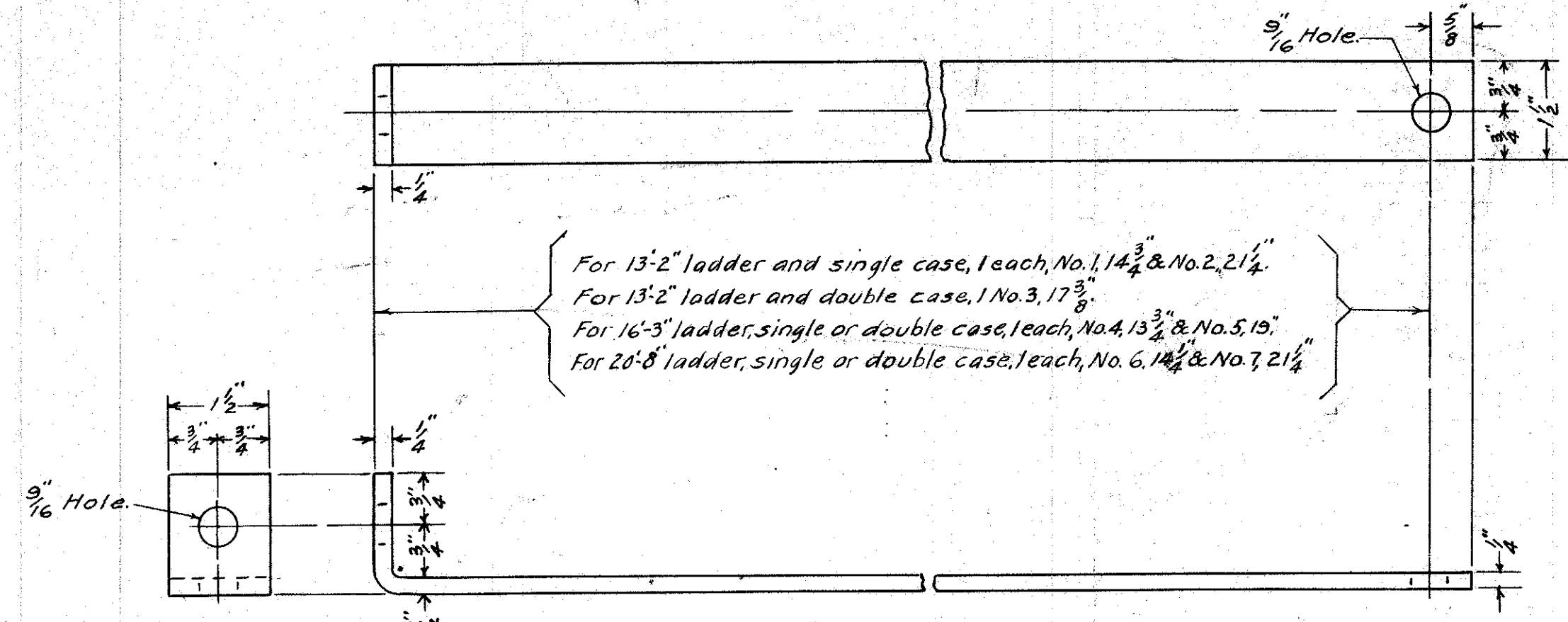


Fig. 3  
Ladder for Searchlight Signal.  
22'-6" High-Single or Double Case.  
Scale: 1/4"=1'-0"



Intermediate Ladder Stay  
Scale: Half Size

For 13'-2" ladder and single case, 1 each, No. 1, 14 3/4" & No. 2, 21 1/4"  
For 13'-2" ladder and double case, 1 No. 3, 17 3/8"  
For 16'-3" ladder, single or double case, 1 each, No. 4, 13 3/8" & No. 5, 19"  
For 20'-8" ladder, single or double case, 1 each, No. 6, 14 1/2" & No. 7, 21 1/4"

Note:  
For details of collar, top ladder stay and application of ladder rungs, see C.E. 10373.st.1.

SOUTHERN PACIFIC COMPANY  
PACIFIC LINES  
STANDARDS  
CENTRALIZED TRAFFIC CONTROL  
LADDERS  
FOR SEARCHLIGHT SIGNALS  
SCALE AS NOTED. 1-8-43.