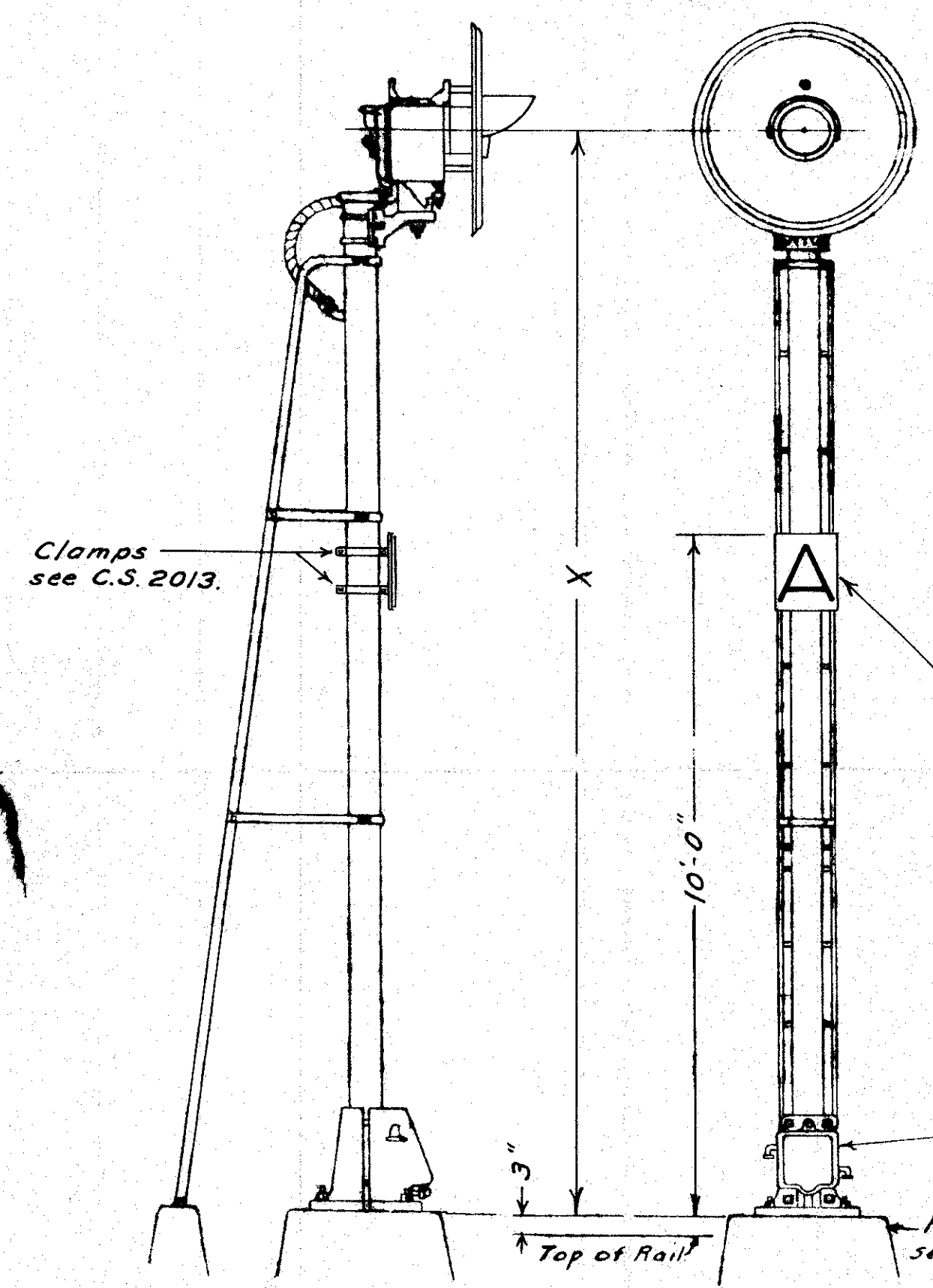


Note: **Painting - by Mfg.**  
 Signals and all metal surfaces exposed to the weather shall have shop coat of red lead.  
 Relay houses and instrument cases to have shop coat of red lead and two coats of  
 aluminum paint on outside surface. Inside of houses and instrument cases to have  
 shop coat of red lead between steel and lining and after lining is installed the  
 interior including all shelves and supports to be painted with aluminum paint.

Note: **Painting - by Railroad.**  
 Inside of all signal masts must be swabbed  
 with raw linseed oil and thoroughly set before  
 installing.  
 All instrument cases and cable terminal boxes  
 must have a priming coat and final coat  
 of aluminum paint inside and out.  
 Signal face and hood to be painted dead  
 black.  
 All other metal surfaces must have spotting  
 of priming paint where required and  
 two coats of aluminum paint.

Foundations to be natural finish.



ONE UNIT SEARCHLIGHT SIGNAL ASSEMBLY  
 FIG. 1 - X = 15'-0"  
 FIG. 1A - X = 18'-6"

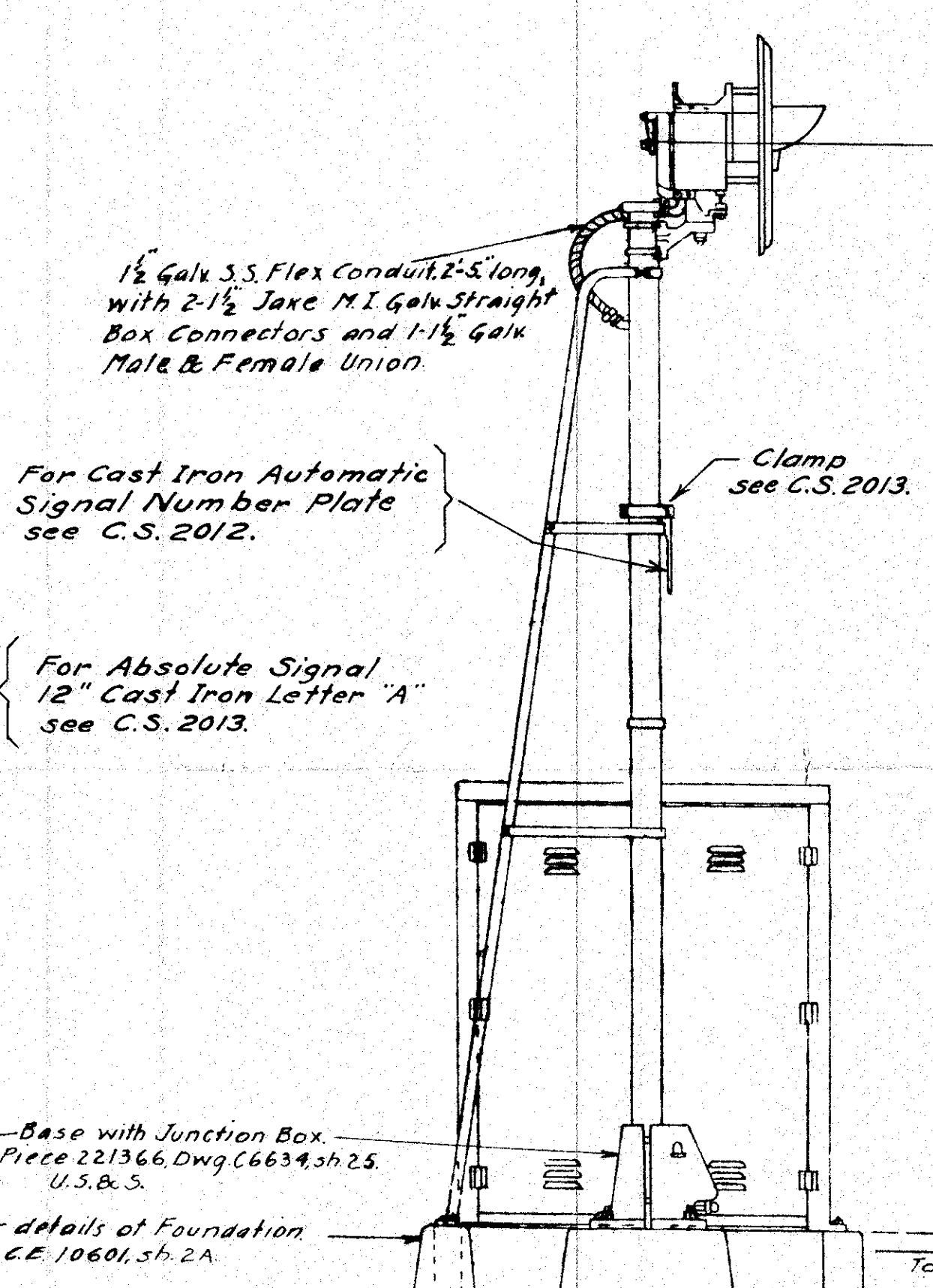
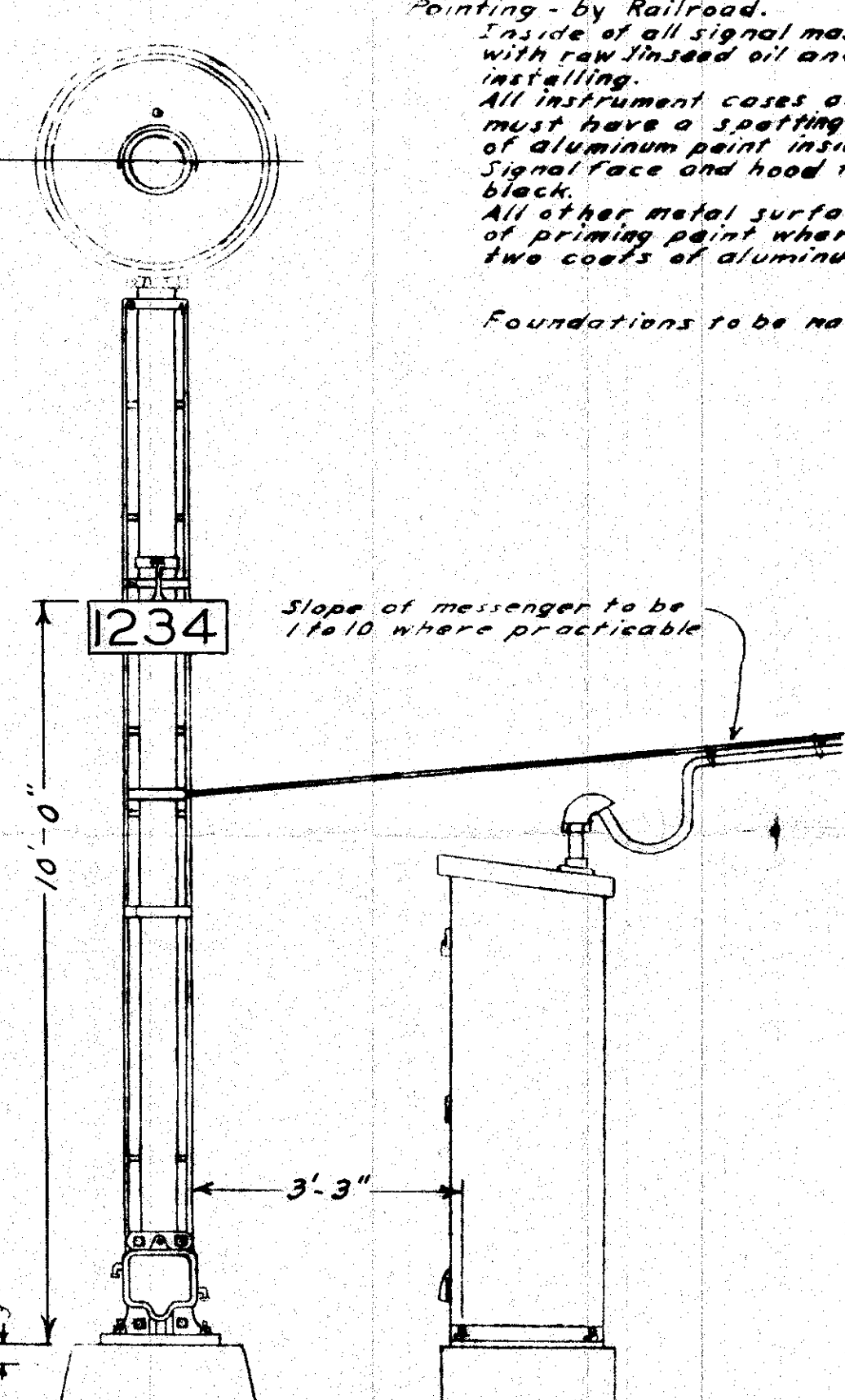


FIGURE 2.  
 SEARCHLIGHT SIGNAL WITH SHEET  
 STEEL INSTRUMENT CASE.



For details of foundation see C.E. 10601 sheet 2A.

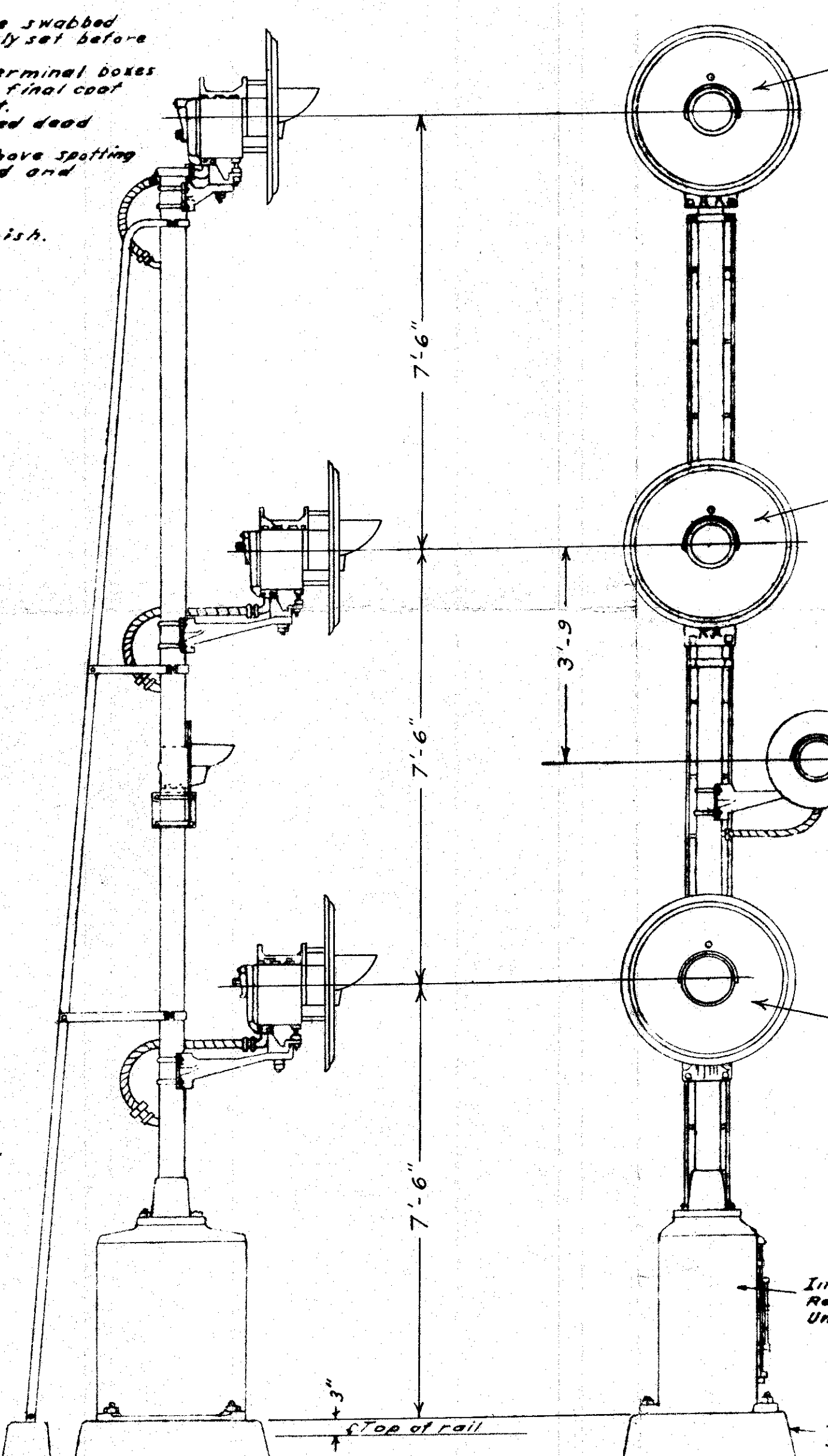
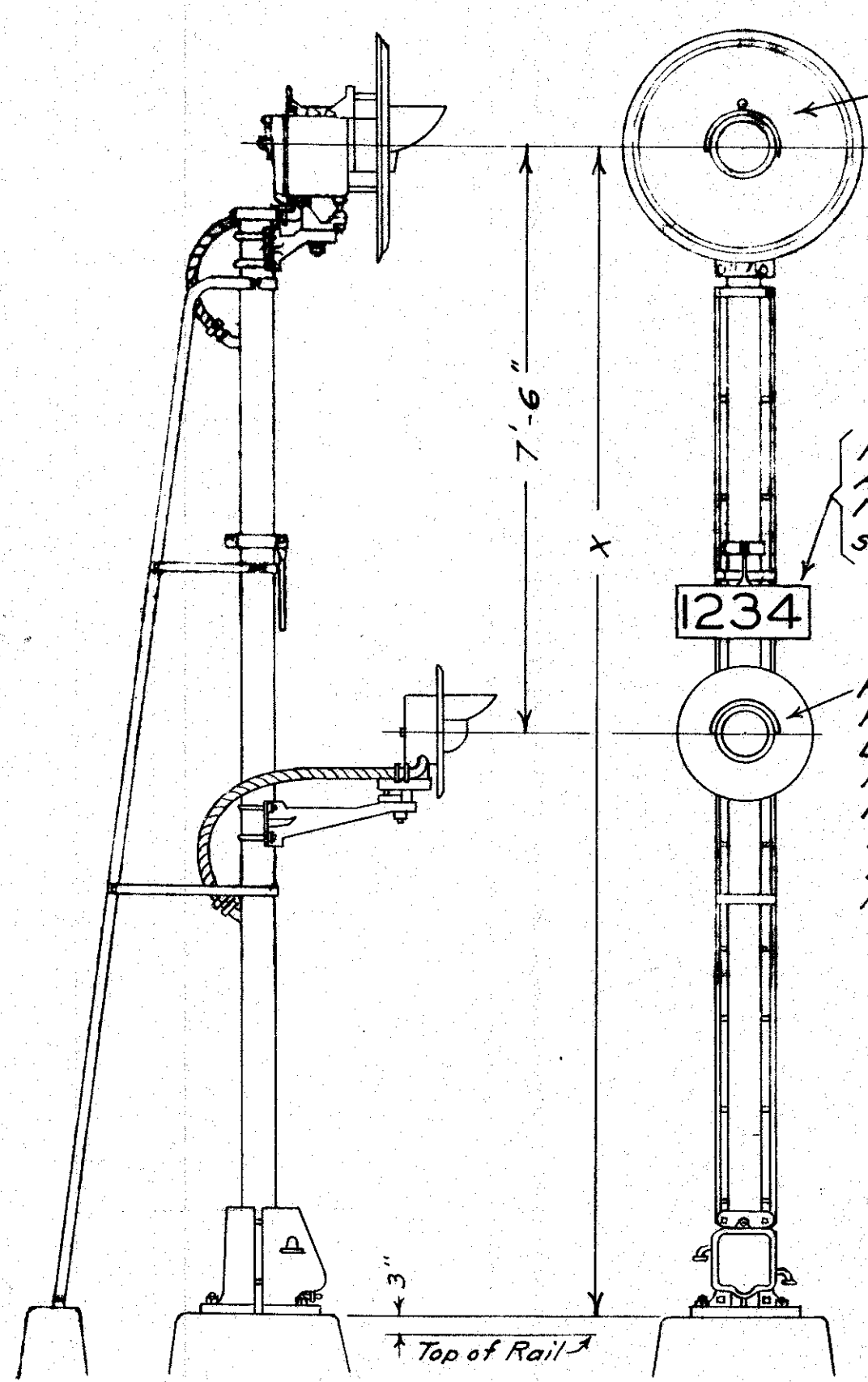


FIGURE 6.  
 SIGNAL ASSEMBLY WITH TWO ROUTE SIGNALS  
 AND CALL ON HC-33 UNIT.

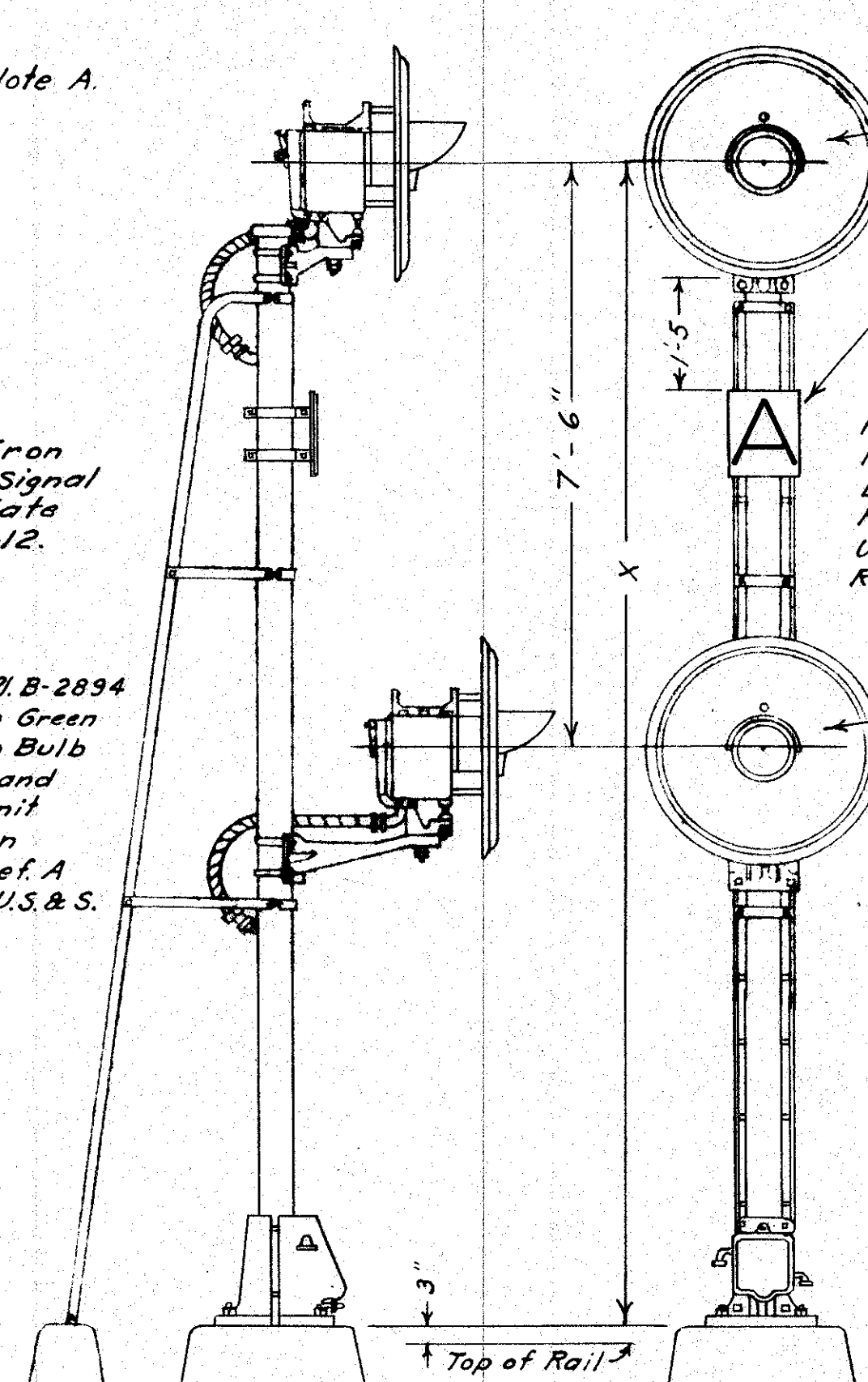
LOCATION
Klamath Falls to Crescent Lake.

Note A:  
 D.C. Searchlight Head Complete Pce. 256833,  
 mounting Bracket Pce. 147483,  
 S.B.M. 259177, U.S. & S.

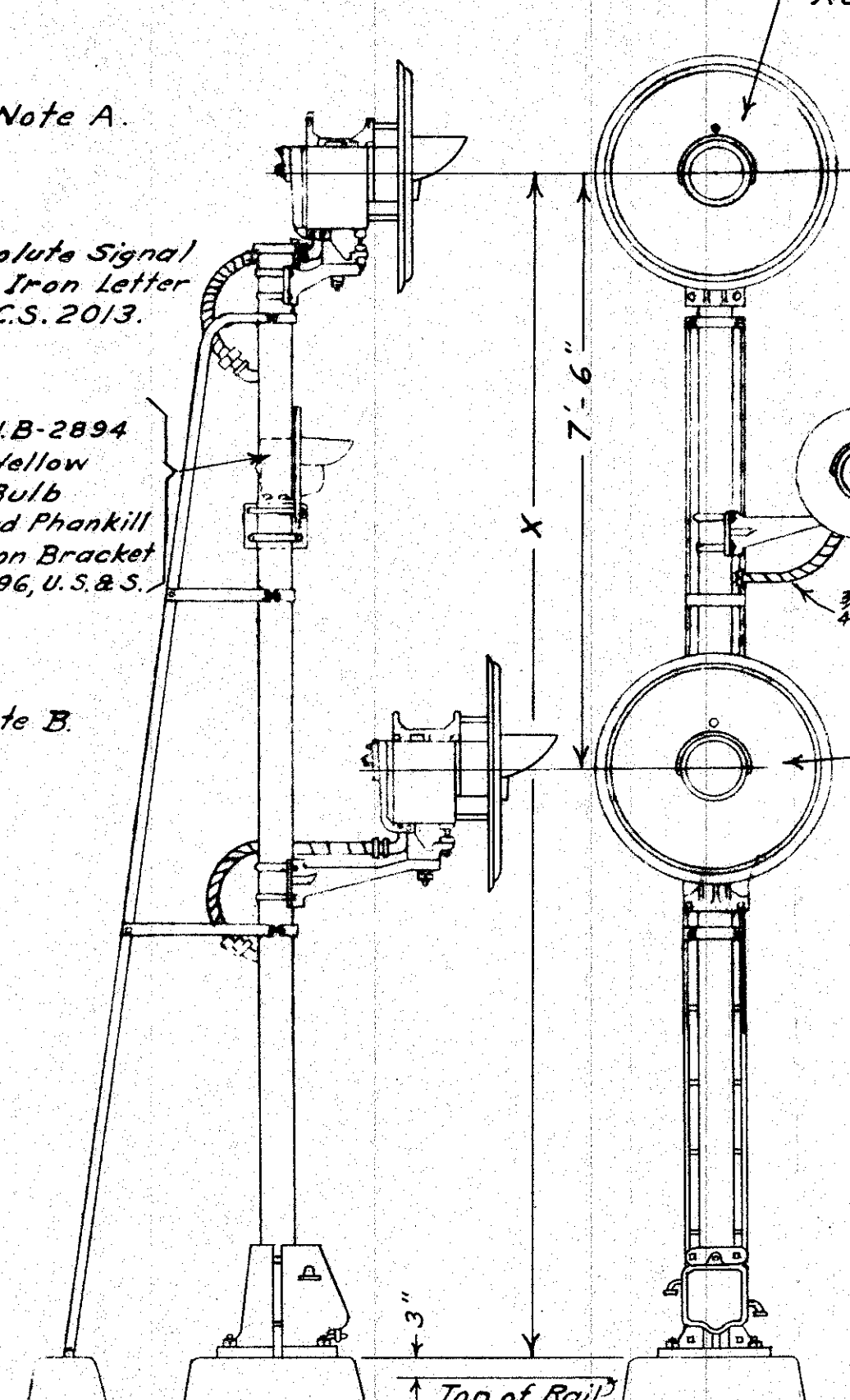
Note B:  
 Same as Note A, except mounting  
 Bracket Pce. 162983.



ONE UNIT SEARCHLIGHT SIGNAL ASSEMBLY  
 WITH APPROACH DIVERGING ROUTE HC-33 UNIT.  
 FIG. 3 - X = 15'-0"  
 FIG. 3A - X = 18'-6"



TWO UNIT SEARCHLIGHT SIGNAL ASSEMBLY.  
 FIG. 4 - X = 15'-0"  
 FIG. 4A - X = 18'-6"



TWO UNIT SEARCHLIGHT SIGNAL ASSEMBLY  
 WITH CALL ON HC-33 UNIT.  
 FIG. 5 - X = 15'-0"  
 FIG. 5A - X = 18'-6"

SOUTHERN PACIFIC COMPANY  
 PACIFIC LINES  
 SIGNAL ASSEMBLIES  
 SCALE: 1/2" = 1'-0" 9-15-52