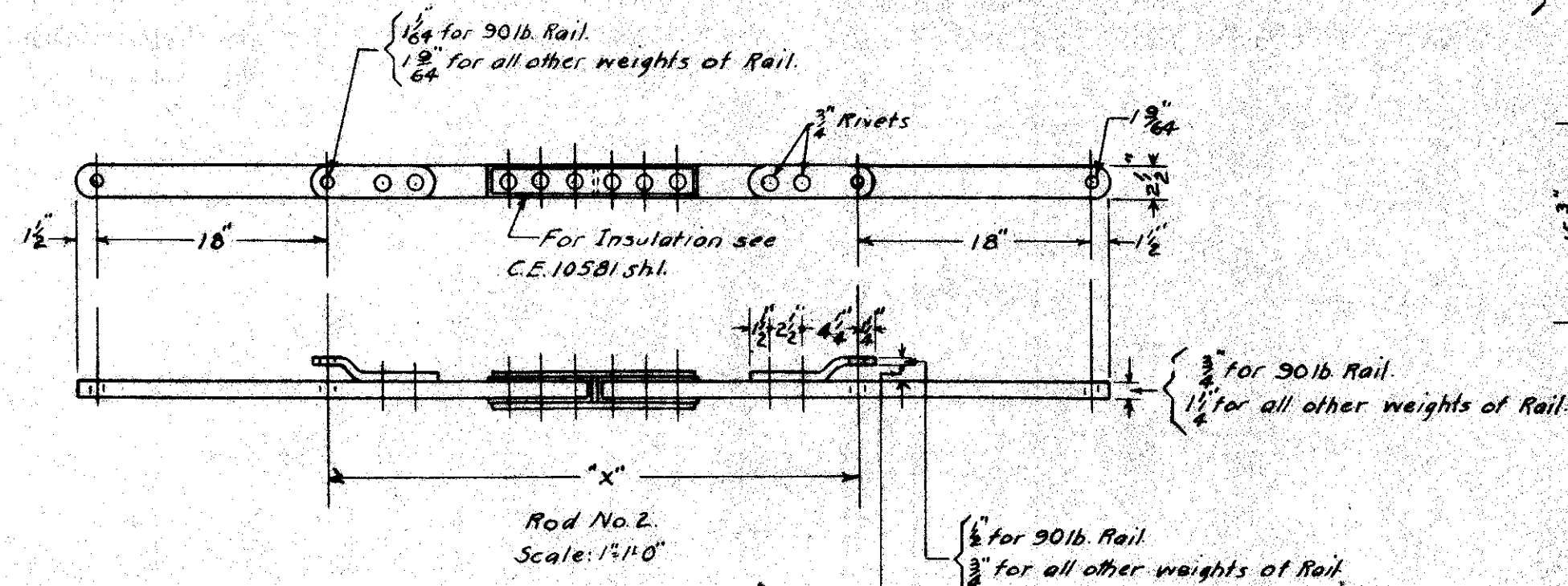


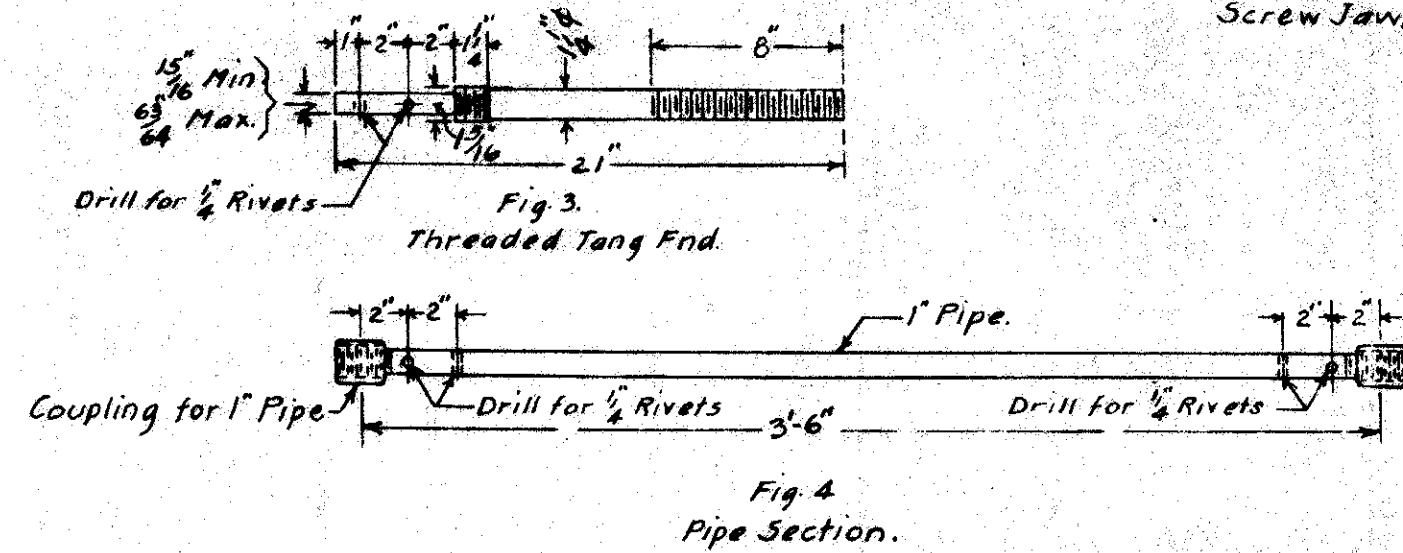
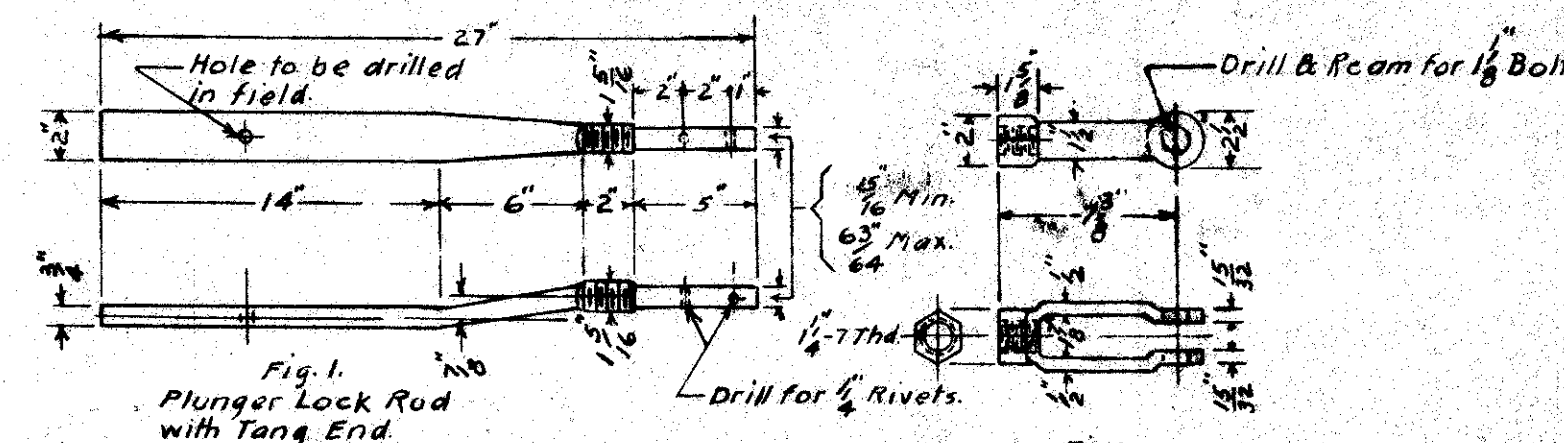
Top of Foundation for Junction Box to be level with Top of Tie.

Style W - 14 Way Junction Box.

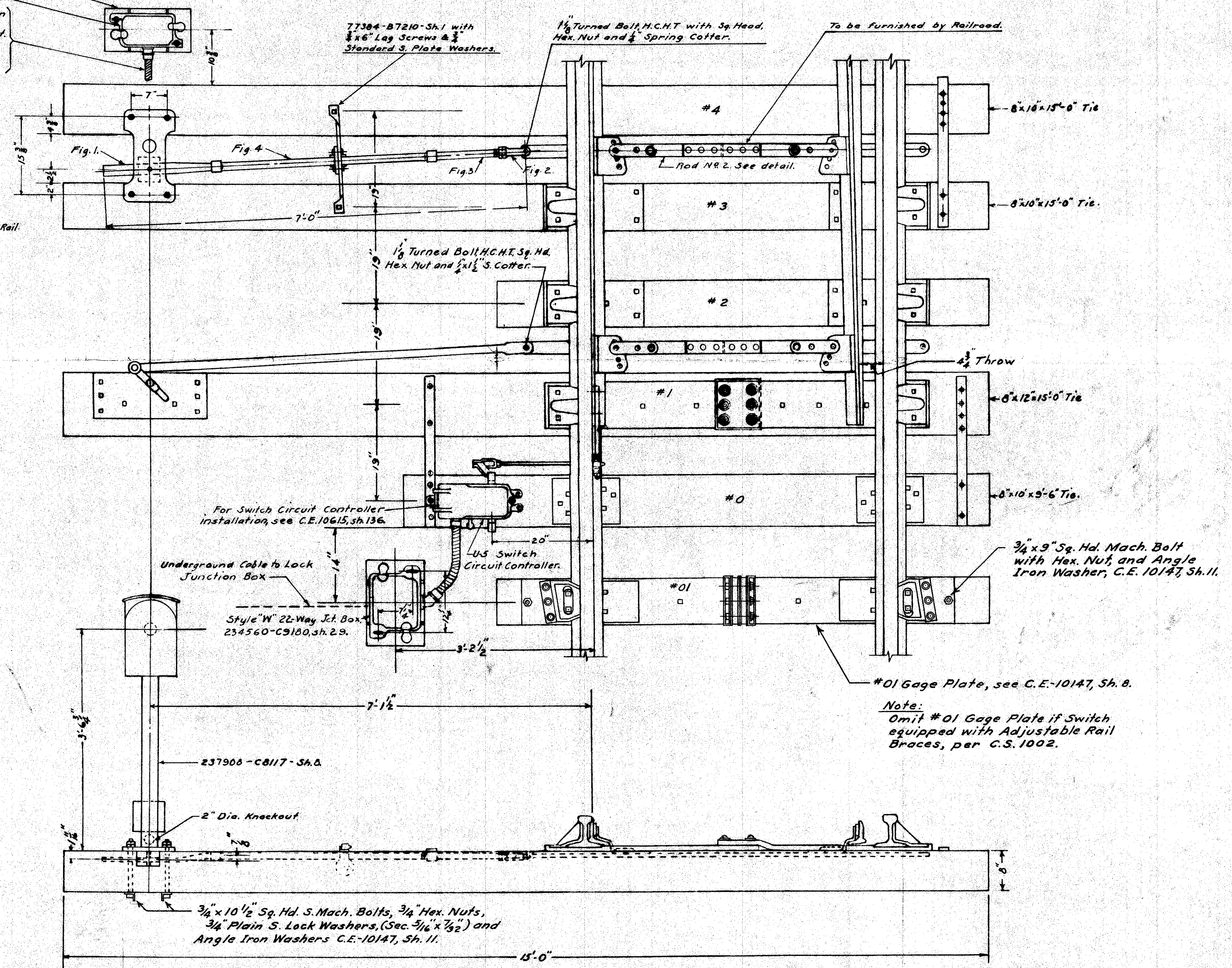
1/2 Galv. S.S. Flex Conduit between Junction Box & Switch Lock.
 Switch Lock End of Flex Conduit.
 1-1/2" Lock Nut.
 1-1/2" Joke Connector.
 1-2" Lead Washer.



Dimension X-16'-6" Points	Dimension X-24'-0" Points
90 lb. Rail - 3'-5 1/4"	90 lb. Rail - 3'-5 3/4"
110 lb. Rail - 3'-4 1/4"	110 lb. Rail - 3'-4 3/4"
112 lb. Rail - 3'-4 1/4"	112 lb. Rail - 3'-4 3/4"
113 lb. Rail - 3'-4 1/4"	113 lb. Rail - 3'-4 3/4"
130 lb. Rail - 3'-4 1/4"	130 lb. Rail - 3'-4 3/4"
131 lb. Rail - 3'-4 1/4"	131 lb. Rail - 3'-4 3/4"
132 lb. Rail - 3'-4 1/4"	132 lb. Rail - 3'-4 3/4"



Alternate.
 If Iron is available,
 1 1/2" Solid Rod may be used.



LOCATION
Klamath Falls to Crescent Lake.

SOUTHERN PACIFIC COMPANY
 PACIFIC LINES

ELECTRIC SWITCH LOCK
 APPLIED TO HAND THROW SWITCHES
 LOCK ATTACHED TO ROD NO 2
 SCALE 1'-1'-0" 12-18-52