

NOTES

LOCATION:  
 (1) LIMITS OF C.T.C. SYSTEM TO BE INDICATED BY SIGNS CONFORMING TO FIG. 1 TO FIG. 6 INCLUSIVE. WHERE POSSIBLE, SIGNS FIG. 1, 1A, 2, 3 OR 3A WILL BE USED, BUT SIGNS FIG. 4 AND 4A MAY BE USED IN LIEU THEREOF WHEN AUTHORIZED BY GENERAL MANAGER.  
 (2) WHERE NECESSARY TO USE SIGNS FIG. 4 AND 4A, THEY WILL BE MOUNTED ON POSTS 13 FEET FROM CENTER LINE OF TRACK OR ON MAST OF SIGNAL BRIDGE ON ENGINEER'S SIDE APPROACHING SIGN. AT LOCATIONS WHERE SIGN FIG. 5 IS ATTACHED TO DWARF SIGNAL BETWEEN TRACKS, SIGN FIG. 4 WILL BE PLACED ON FIREMAN'S SIDE APPROACHING SIGN.  
 (3) WHERE TRACK SPACING IS NOT SUFFICIENT TO INSTALL SIGN FIG. 2, USE SIGN FIG. 5 ON SIGNAL MAST AND INSTALL SIGN FIG. 4 ON POST ON OPPOSITE SIDE OF TRACK PER NOTE (2).  
 STYLE OF LETTERS: EGYPTIAN, SIZE AS INDICATED. STROKE OF LETTERS TO BE 1/8 OF HEIGHT.  
 PAINTING: FACE OF BOARD WHITE WITH BLACK LETTERS. BASE OF POST TO HAVE A COAT OF COAL TAR APPLIED HOT TO 6" ABOVE GROUND OR BE SUBJECTED TO A BATH OF CREOSOTE OIL FOR A PERIOD OF NOT LESS THAN 24 HOURS. BALANCE OF POST AND BACK AND SIDES OF BOARD TO BE PAINTED WITH METALLIC AND LAMPBLACK, MAKING A VERY DARK BROWN.

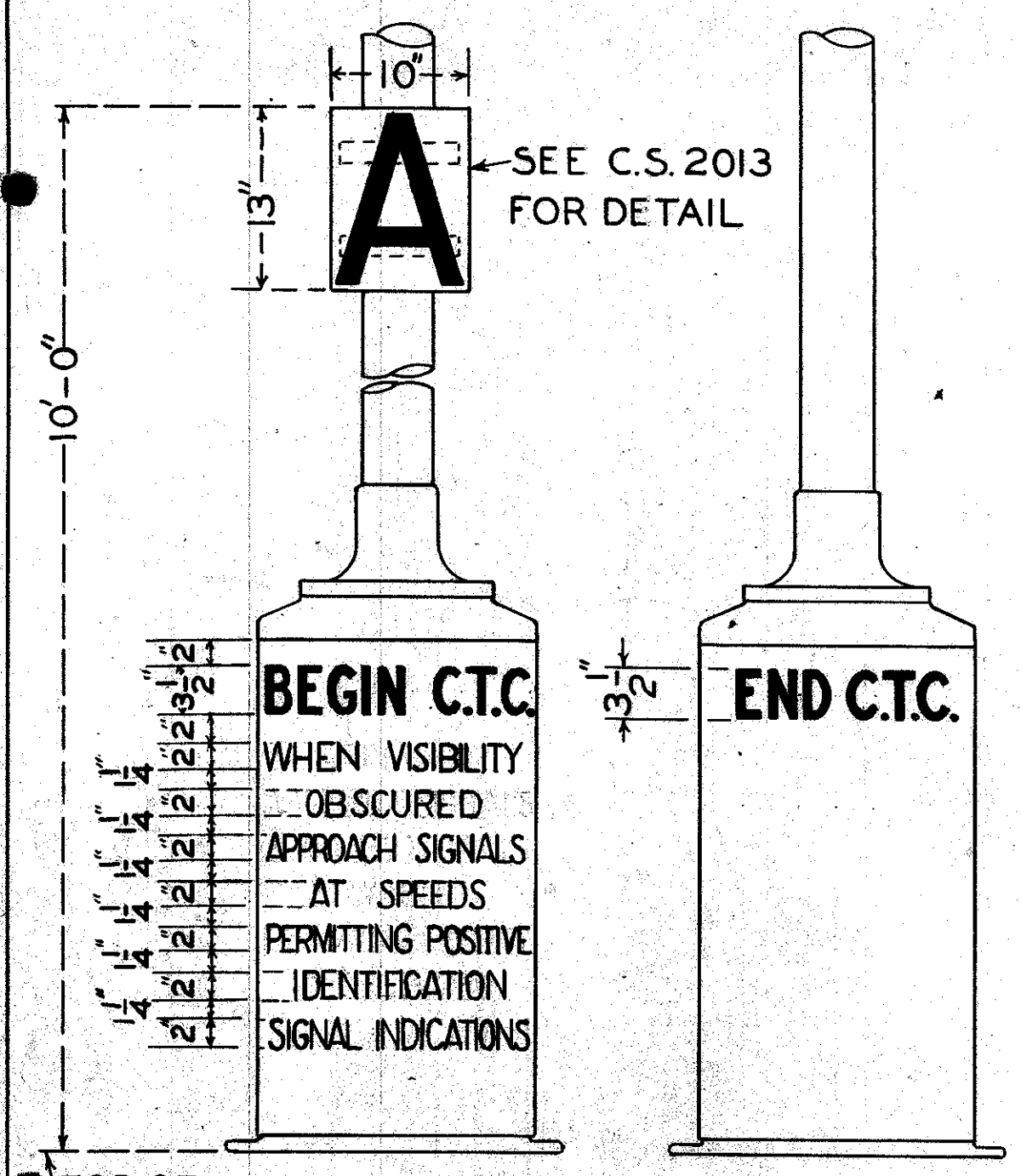


FIG. 1  
SIGNS ON SINGLE SIGNAL CASE

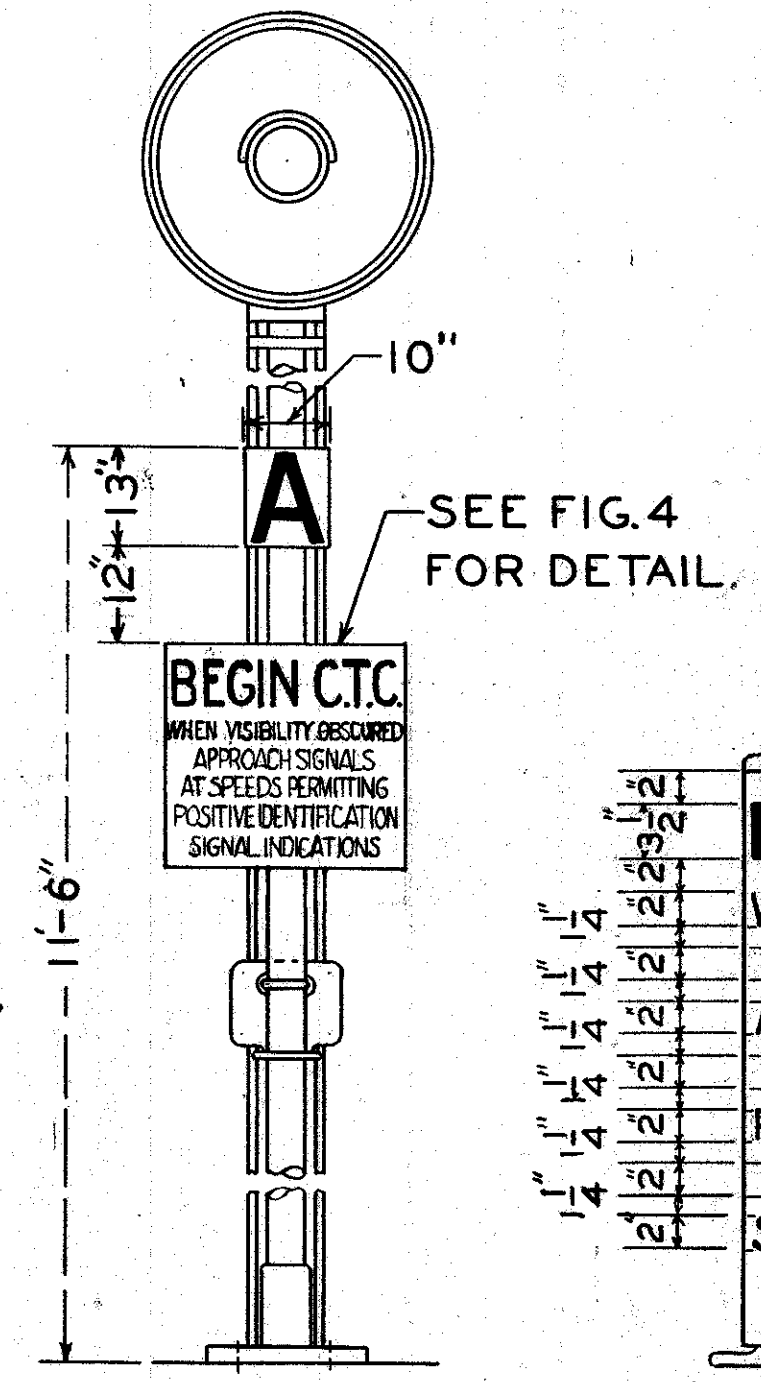


FIG. 2  
SIGN ON SIGNAL MAST WITHOUT CASE. IF BETWEEN TRACKS, CENTERS MUST BE 20'-0". SEE NOTE (3)

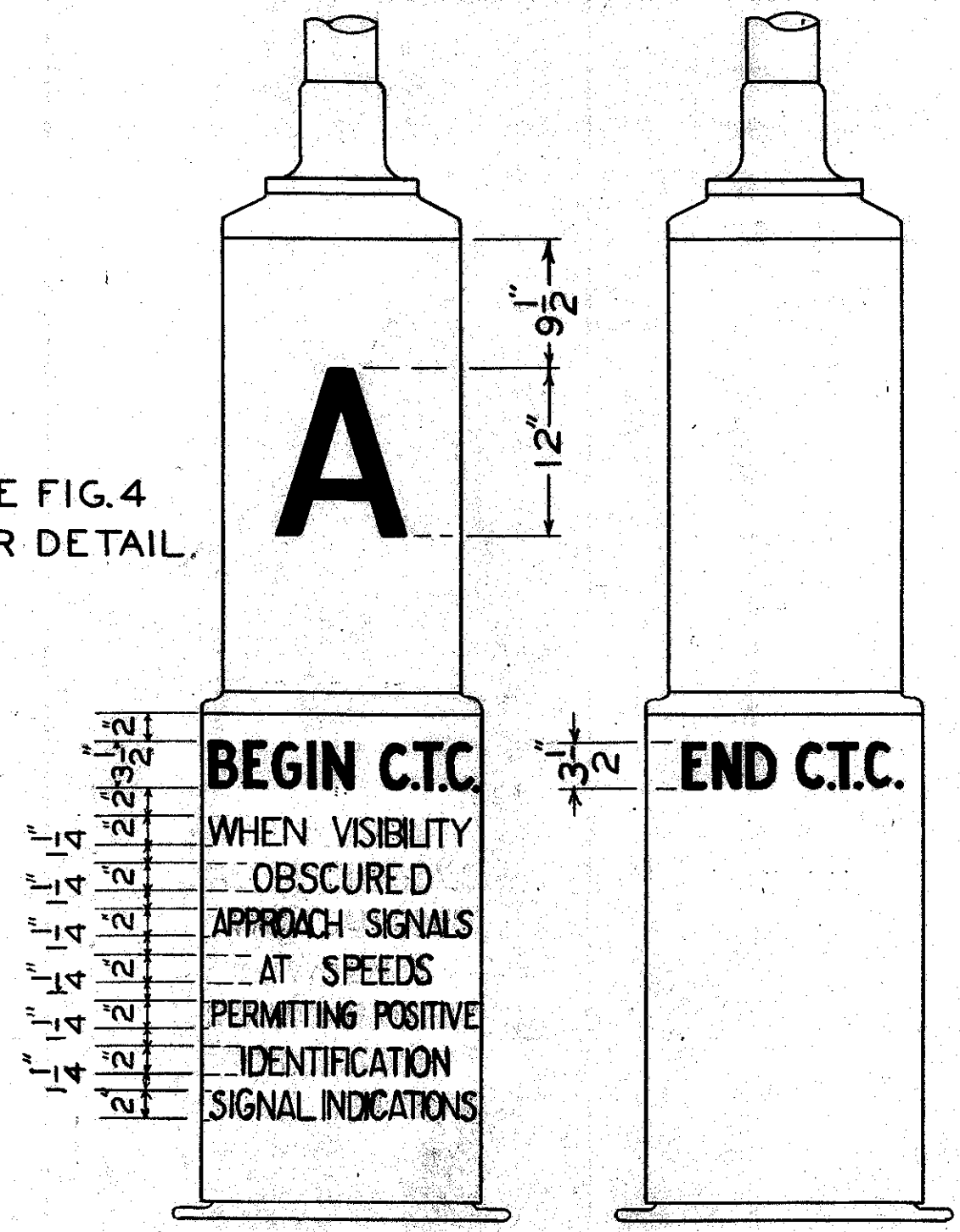


FIG. 3  
SIGNS ON DOUBLE SIGNAL CASE

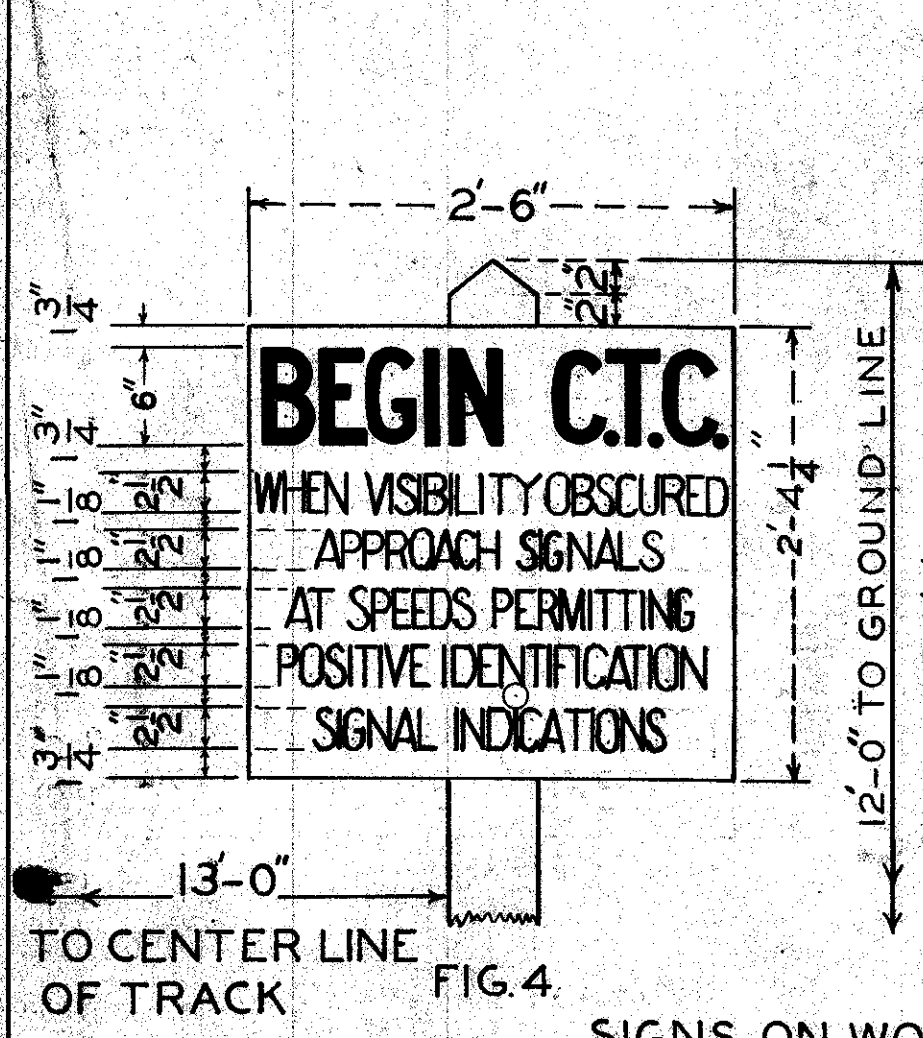


FIG. 4  
SIGNS ON WOOD POST

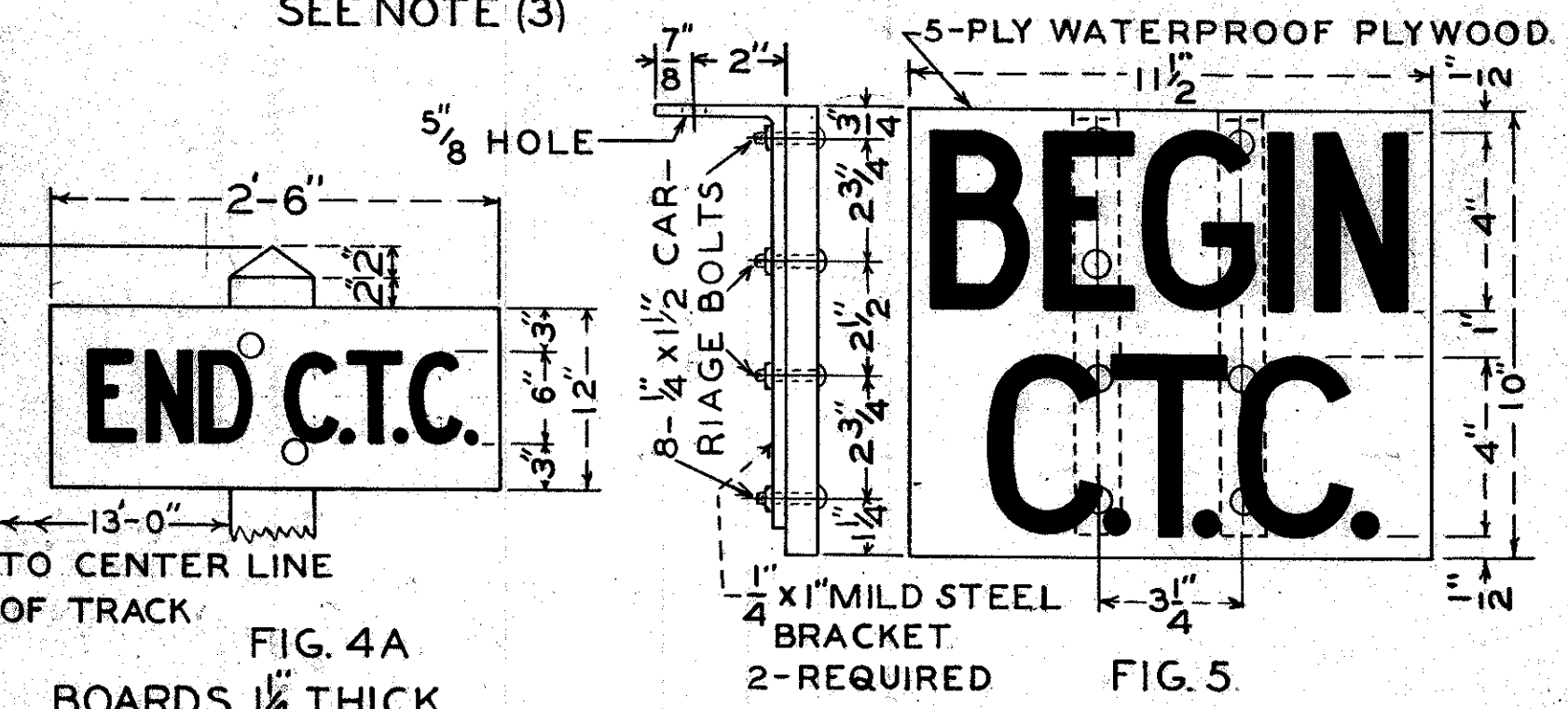


FIG. 5  
SIGN FOR MOUNTING ON FACE OF DWARF SIGNAL  
NOTE: THIS SIGN WITH WORDING "END C.T.C." TO BE USED WHERE REQUIRED.

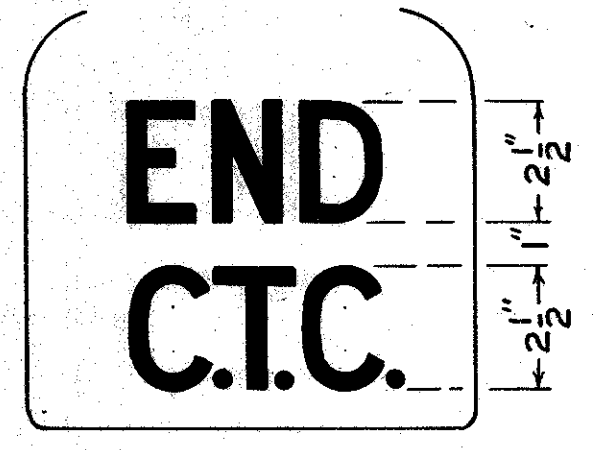


FIG. 6  
SIGN ON DOOR OF DWARF SEARCHLIGHT SIGNAL

SOUTHERN PACIFIC LINES  
 COMMON STANDARD  
 SIGNS INDICATING LIMITS  
 OF C.T.C. SYSTEM  
 NO SCALE  
 ADOPTED: APR. 7, 1947.  
 REVISED: JULY 7, 1948.