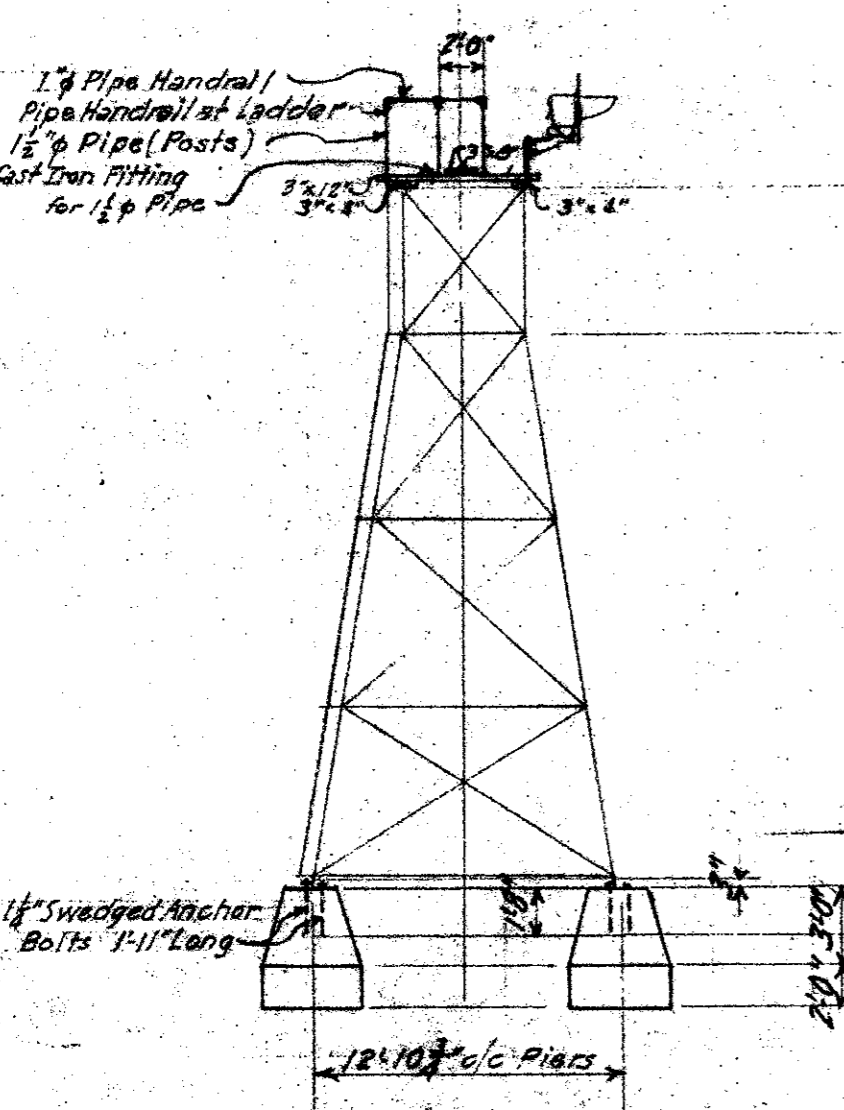


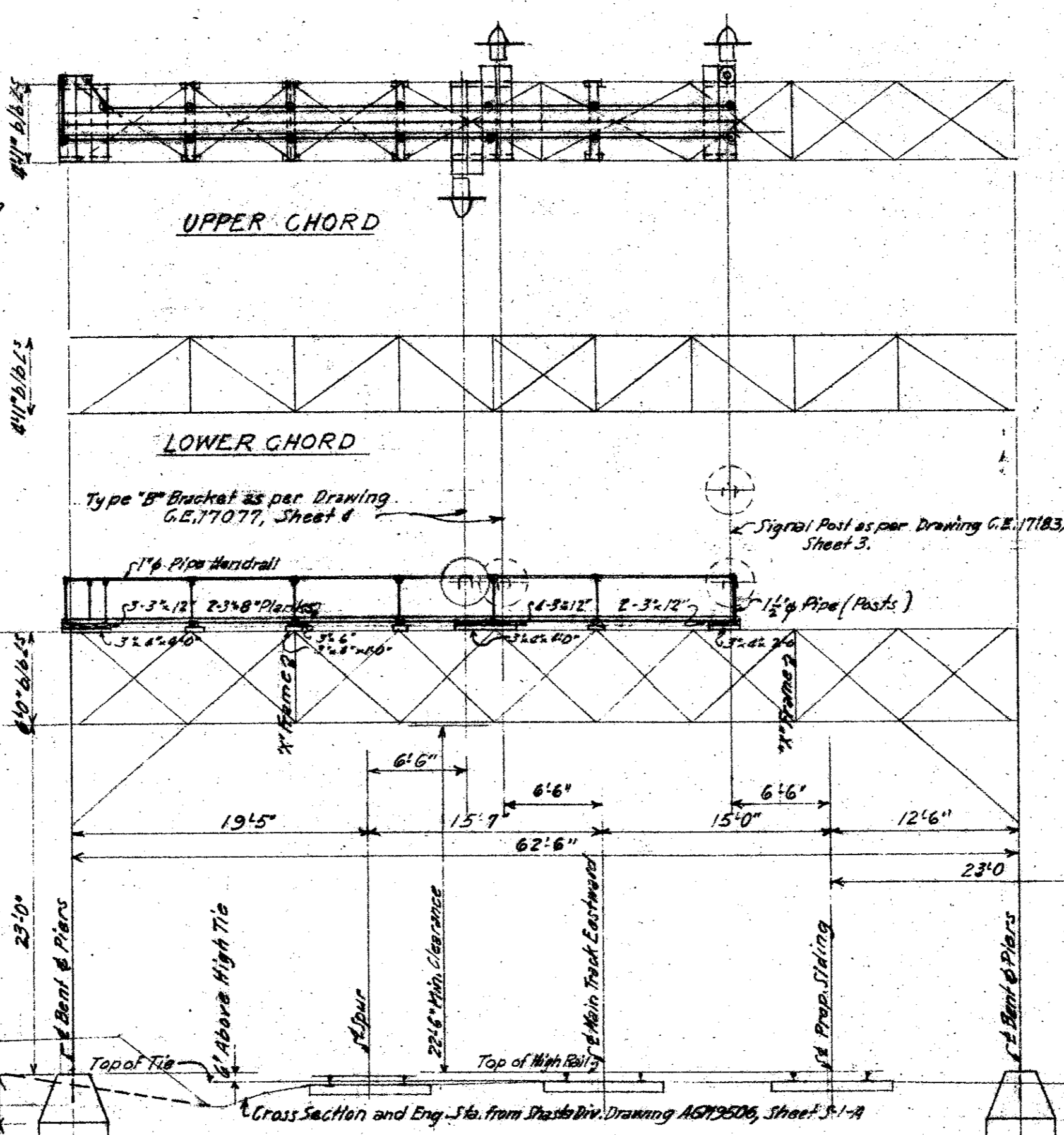
TYPICAL SECTION THROUGH DECK

Note:
Signal Bridge is S.H. from Pac. El. Ry. L.A.

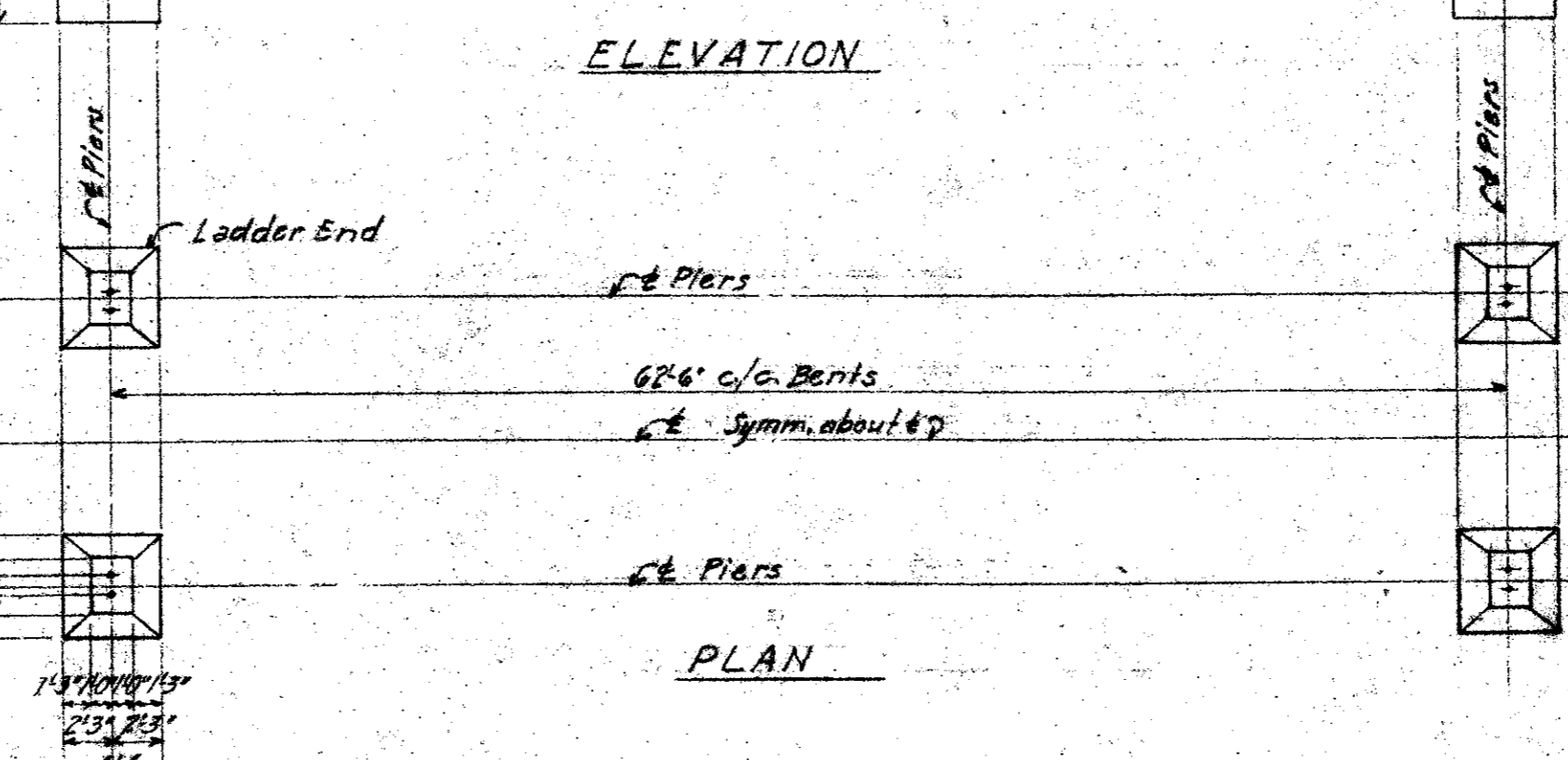


END ELEVATION

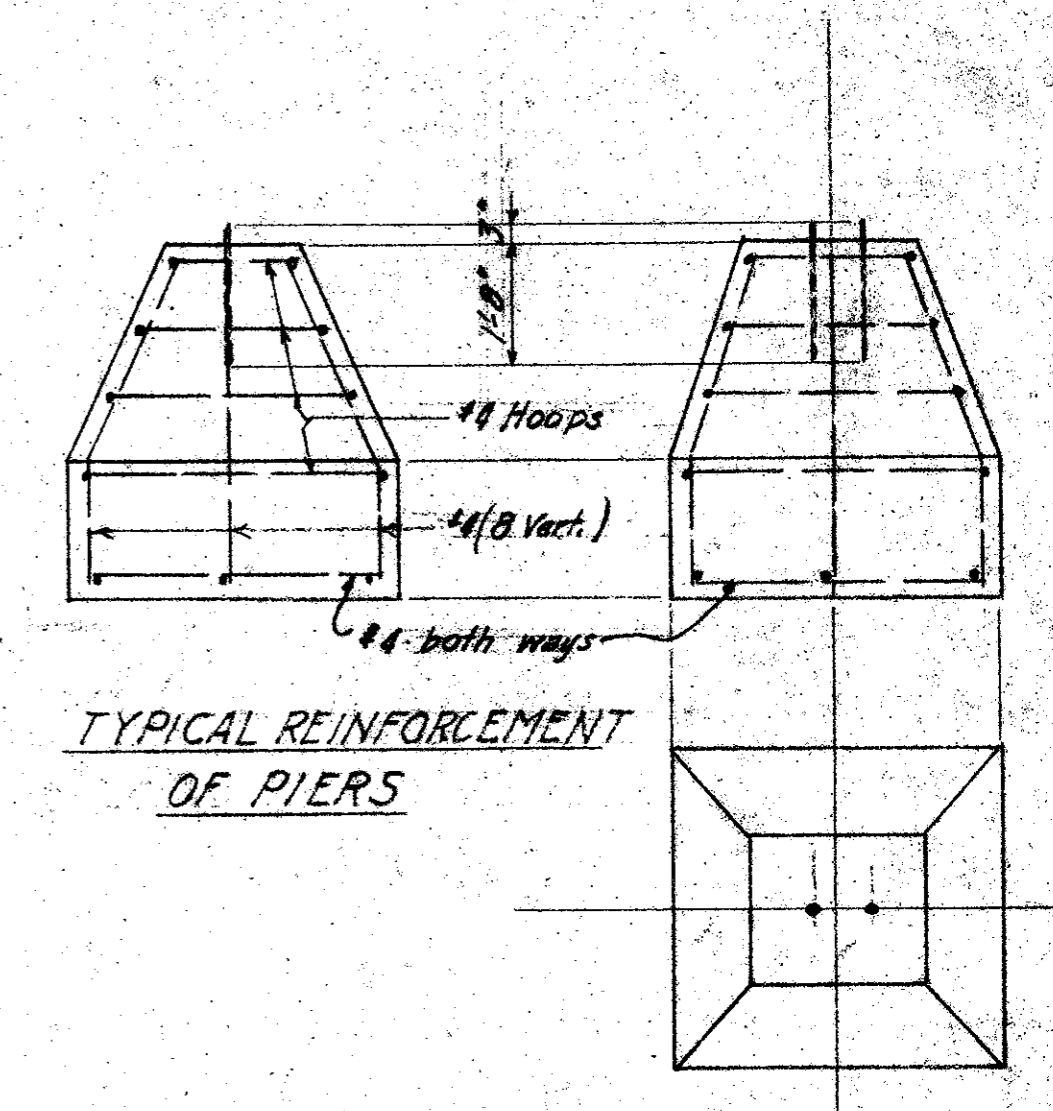
DETAIL OF SWAGED ANCHOR BOLTS
8 Required



ELEVATION



PLAN



TYPICAL REINFORCEMENT OF PIERS

SOUTHERN PACIFIC COMPANY
Pacific Lines
DIAGRAM
THREE TRACK SIGNAL BRIDGE
N. Chiloquin, Eng. Sta. 634829 - Shasta Division.
No Scale, S.P.

Chiloquin - East End of Crossover

G.E.
Drawing 30509
Sheet 3

Drawn 1065