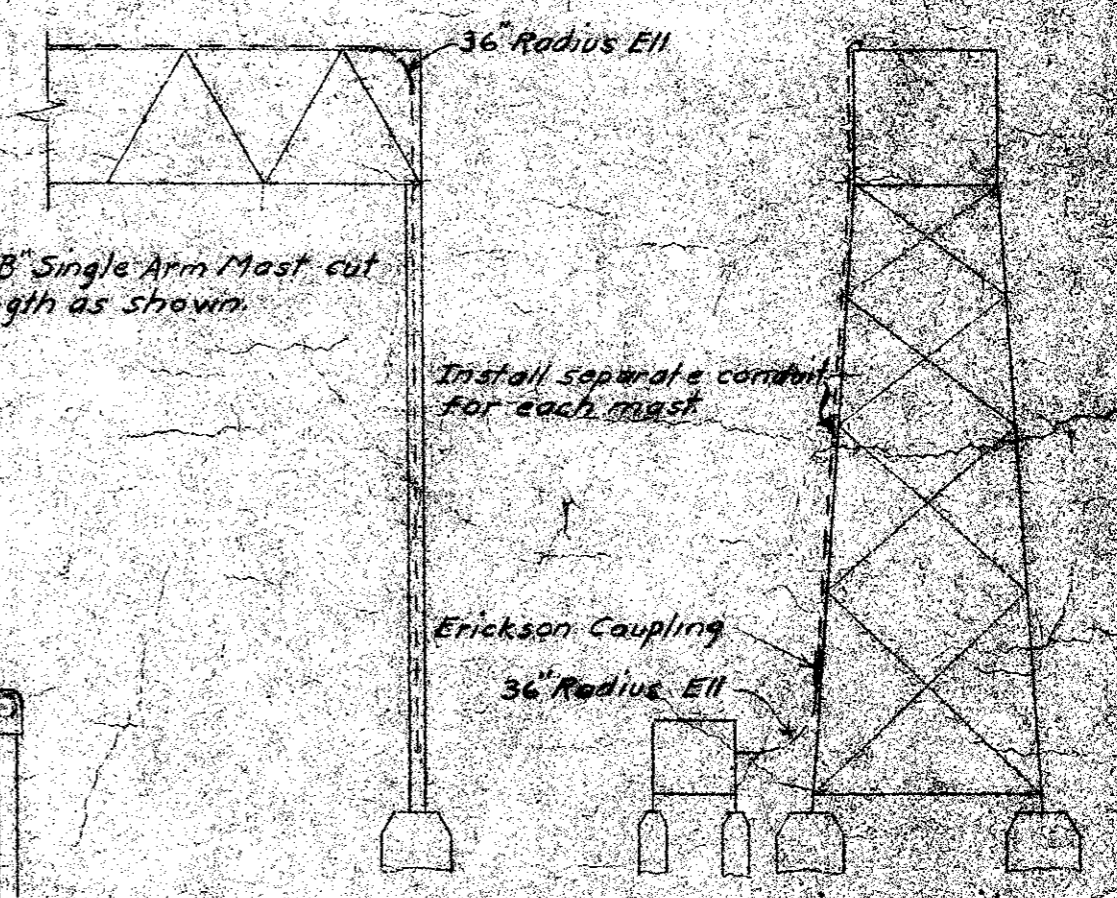
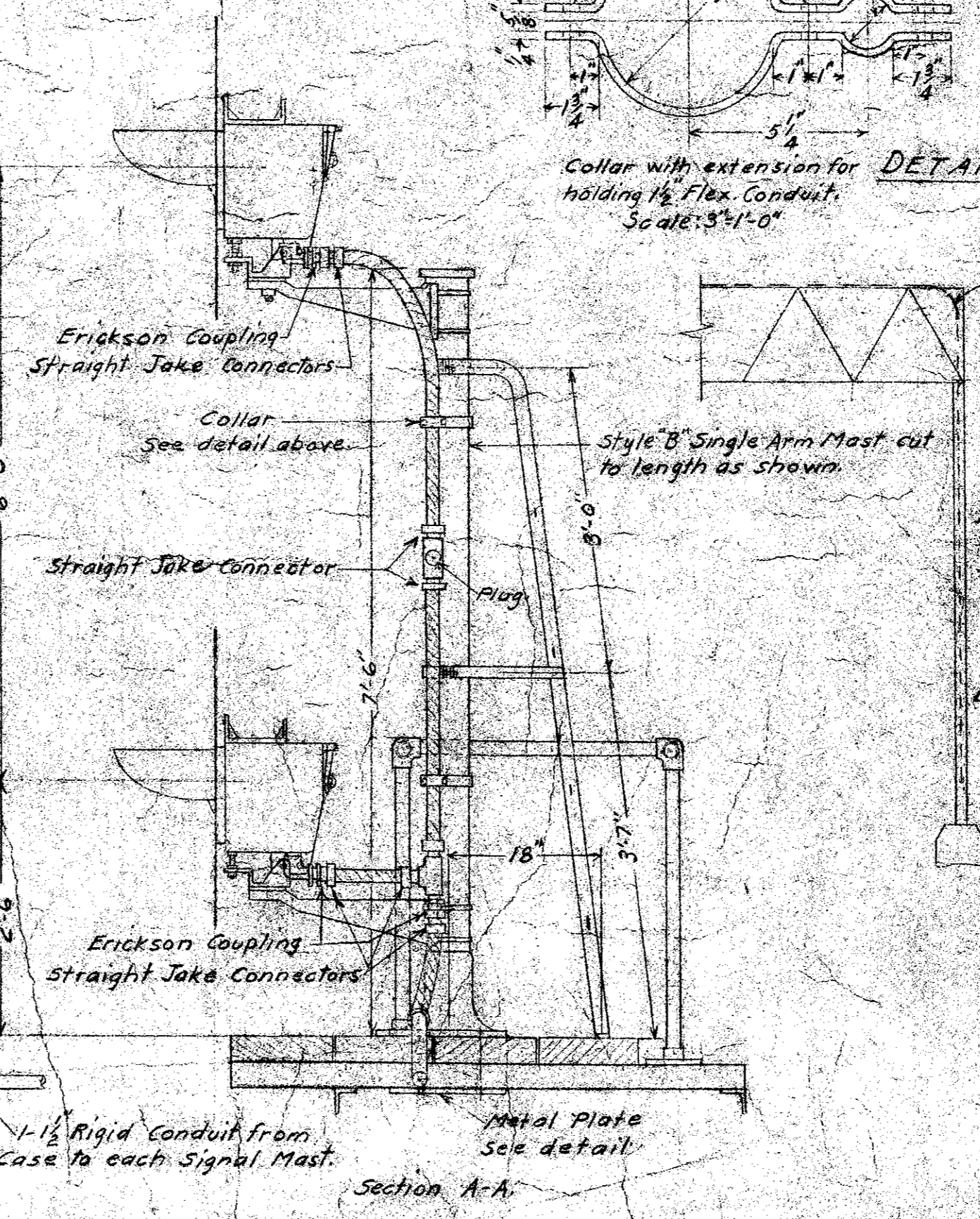
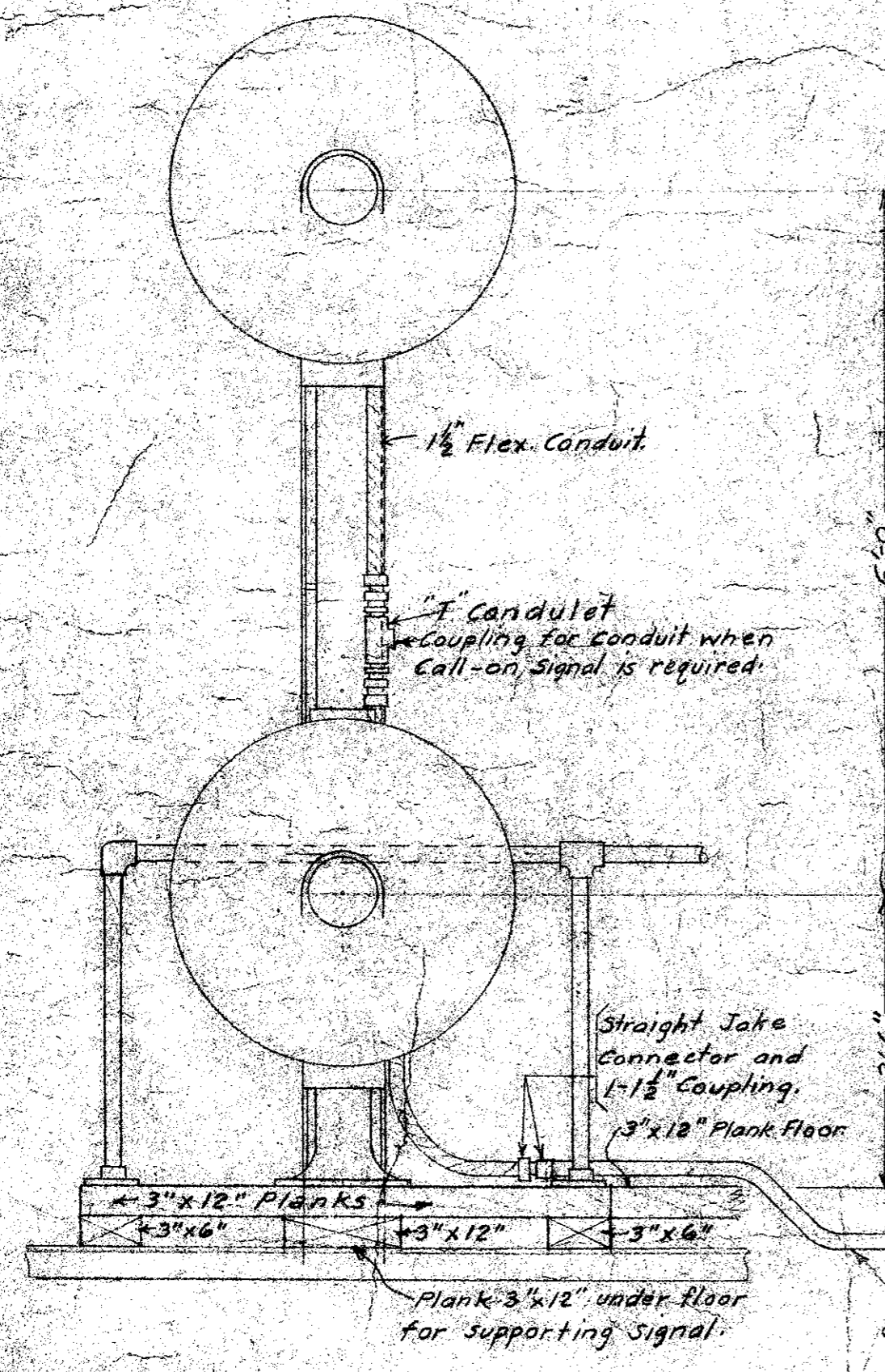


DETAIL OF BOLT HEAD STOP  
FULL SIZE



SOUTHERN PACIFIC COMPANY  
PACIFIC LINES  
TWO TRACK SIGNAL BRIDGES  
DETAILS FOR INSTALLING SIGNALS  
SCALE: 3/4" = 1'-0" 8-26-42  
Rev. July 12, 1943